

CHAPTER 19

Electrical Circuits



Figure 19.1 Electric energy in massive quantities is transmitted from this hydroelectric facility, the Srisailem power station located along the Krishna River in India, by the movement of charge—that is, by electric current. (credit: Chintohe, Wikimedia Commons)

Chapter Outline

[19.1 Ohm's law](#)

[19.2 Series Circuits](#)

[19.3 Parallel Circuits](#)

[19.4 Electric Power](#)

INTRODUCTION The flicker of numbers on a handheld calculator, nerve impulses carrying signals of vision to the brain, an ultrasound device sending a signal to a computer screen, the brain sending a message for a baby to twitch its toes, an electric train pulling into a station, a hydroelectric plant sending energy to metropolitan and rural users—these and many other examples of electricity involve electric current, which is the movement of charge. Humanity has harnessed electricity, the basis of this technology, to improve our quality of life. Whereas the previous chapter concentrated on static electricity and the fundamental force underlying its behavior, the next two chapters will be devoted to electric and magnetic phenomena involving current. In addition to exploring applications of electricity, we shall gain new insights into the workings of nature.

19.1 Ohm's law

Section Learning Objectives

By the end of this section, you will be able to do the following:

- Describe how current is related to charge and time, and distinguish between direct current and alternating current
- Define resistance and verbally describe Ohm's law
- Calculate current and solve problems involving Ohm's law

Section Key Terms

alternating current ampere conventional current direct current electric current

nonohmic ohmic Ohm's law resistance

Direct and Alternating Current

Just as water flows from high to low elevation, electrons that are free to move will travel from a place with low potential to a place with high potential. A battery has two terminals that are at different potentials. If the terminals are connected by a conducting wire, an electric current (charges) will flow, as shown in [Figure 19.2](#). Electrons will then move from the low-potential terminal of the battery (the *negative* end) through the wire and enter the high-potential terminal of the battery (the *positive* end).

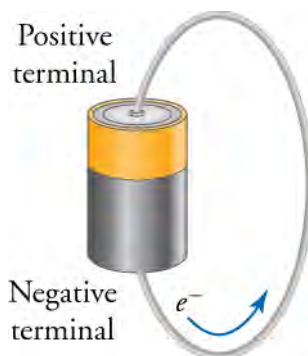


Figure 19.2 A battery has a wire connecting the positive and negative terminals, which allows electrons to move from the negative terminal to the positive terminal.

Electric current is the rate at which electric charge moves. A large current, such as that used to start a truck engine, moves a large amount very quickly, whereas a small current, such as that used to operate a hand-held calculator, moves a small amount of charge more slowly. In equation form, electric current I is defined as

$$I = \frac{\Delta Q}{\Delta t}$$

where ΔQ is the amount of charge that flows past a given area and Δt is the time it takes for the charge to move past the area. The SI unit for electric current is the ampere (A), which is named in honor of the French physicist André-Marie Ampère (1775–1836). One **ampere** is one coulomb per second, or

$$1 \text{ A} = 1 \text{ C/s.}$$

Electric current moving through a wire is in many ways similar to water current moving through a pipe. To define the flow of water through a pipe, we can count the water molecules that flow past a given section of the pipe. As shown in [Figure 19.3](#), electric current is very similar. We count the number of electrical charges that flow past a section of a conductor; in this case, a wire.

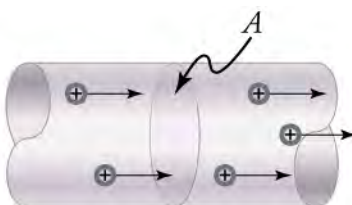


Figure 19.3 The electric current moving through this wire is the charge that moves past the cross-section A divided by the time it takes for this charge to move past the section A.

Assume each particle q in [Figure 19.3](#) carries a charge $q = 1 \text{ nC}$, in which case the total charge shown would be $\Delta Q = 5q = 5 \text{ nC}$. If these charges move past the area A in a time $\Delta t = 1 \text{ ns}$, then the current would be

$$I = \frac{\Delta Q}{\Delta t} = \frac{5 \text{ nC}}{1 \text{ ns}} = 5 \text{ A}.$$

19.1

Note that we assigned a positive charge to the charges in [Figure 19.3](#). Normally, negative charges—electrons—are the mobile charge in wires, as indicated in [Figure 19.2](#). Positive charges are normally stuck in place in solids and cannot move freely. However, because a positive current moving to the right is the same as a negative current of equal magnitude moving to the left, as shown in [Figure 19.4](#), we define **conventional current** to flow in the direction that a positive charge would flow if it could move. Thus, unless otherwise specified, an electric current is assumed to be composed of positive charges.

Also note that one Coulomb is a significant amount of electric charge, so 5 A is a very large current. Most often you will see current on the order of milliamperes (mA).

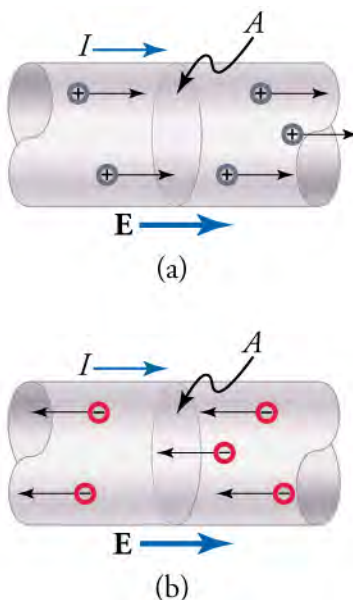


Figure 19.4 (a) The electric field points to the right, the current moves to the right, and positive charges move to the right. (b) The equivalent situation but with negative charges moving to the left. The electric field and the current are still to the right.

Snap Lab

Vegetable Current

This lab helps students understand how current works. Given that particles confined in a pipe cannot occupy the same space, pushing more particles into one end of the pipe will force the same number of particles out of the opposite end. This creates a current of particles.

Find a straw and dried peas that can move freely in the straw. Place the straw flat on a table and fill the straw with peas. When you push one pea in at one end, a different pea should come out of the other end. This demonstration is a model for

an electric current. Identify the part of the model that represents electrons and the part of the model that represents the supply of electrical energy. For a period of 30 s, count the number of peas you can push through the straw. When finished, calculate the *pea current* by dividing the number of peas by the time in seconds.

Note that the flow of peas is based on the peas physically bumping into each other; electrons push each other along due to mutually repulsive electrostatic forces.

GRASP CHECK

Suppose four peas per second pass through a straw. If each pea carried a charge of 1 nC, what would the electric current be through the straw?

- The electric current would be the pea charge multiplied by 1 nC/pea.
- The electric current would be the pea current calculated in the lab multiplied by 1 nC/pea.
- The electric current would be the pea current calculated in the lab.
- The electric current would be the pea charge divided by time.

The direction of conventional current is *the direction that positive charge would flow*. Depending on the situation, positive charges, negative charges, or both may move. In metal wires, as we have seen, current is carried by electrons, so the negative charges move. In ionic solutions, such as salt water, both positively charged and negatively charged ions move. This is also true in nerve cells. Pure positive currents are relatively rare but do occur. History credits American politician and scientist Benjamin Franklin with describing current as the direction that positive charges flow through a wire. He named the type of charge associated with electrons negative long before they were known to carry current in so many situations.

As electrons move through a metal wire, they encounter obstacles such as other electrons, atoms, impurities, etc. The electrons scatter from these obstacles, as depicted in [Figure 19.5](#). Normally, the electrons lose energy with each interaction. ¹To keep the electrons moving thus requires a force, which is supplied by an electric field. The electric field in a wire points from the end of the wire at the higher potential to the end of the wire at the lower potential. Electrons, carrying a negative charge, move on average (or *drift*) in the direction opposite the electric field, as shown in [Figure 19.5](#).

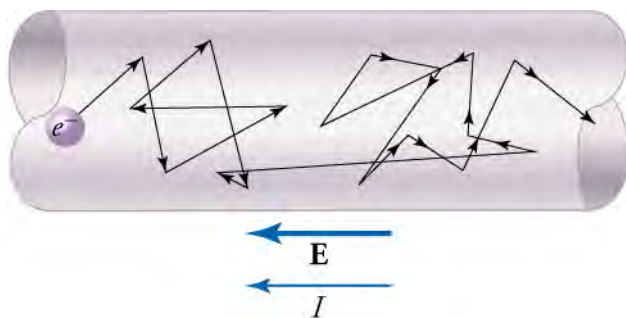


Figure 19.5 Free electrons moving in a conductor make many collisions with other electrons and atoms. The path of one electron is shown. The average velocity of free electrons is in the direction opposite to the electric field. The collisions normally transfer energy to the conductor, so a constant supply of energy is required to maintain a steady current.

So far, we have discussed current that moves constantly in a single direction. This is called **direct current**, because the electric charge flows in only one direction. Direct current is often called *DC* current.

Many sources of electrical power, such as the hydroelectric dam shown at the beginning of this chapter, produce **alternating current**, in which the current direction alternates back and forth. Alternating current is often called *AC current*. Alternating current moves back and forth at regular time intervals, as shown in [Figure 19.6](#). The alternating current that comes from a normal wall socket does not suddenly switch directions. Rather, it increases smoothly up to a maximum current and then smoothly decreases back to zero. It then grows again, but in the opposite direction until it has reached the same maximum value. After that, it decreases smoothly back to zero, and the cycle starts over again.

¹This energy is transferred to the wire and becomes thermal energy, which is what makes wires hot when they carry a lot of current.

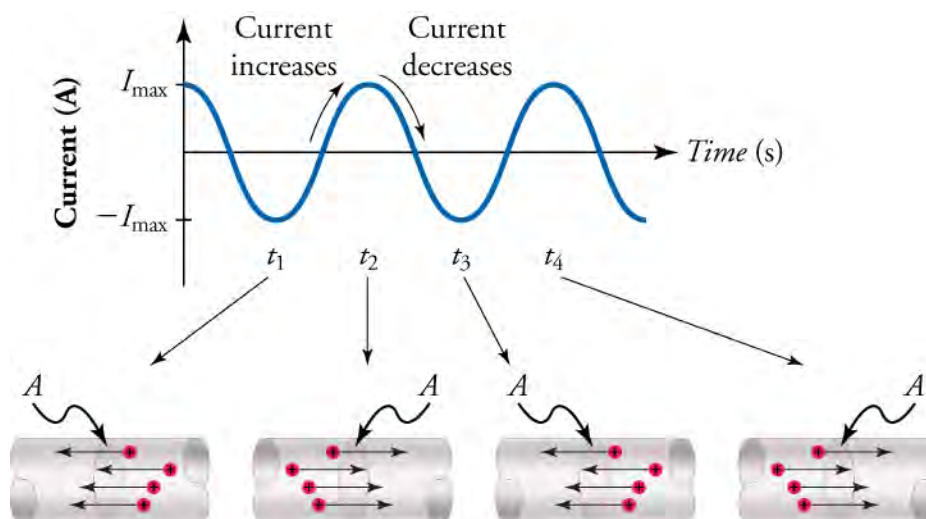


Figure 19.6 With alternating current, the direction of the current reverses at regular time intervals. The graph on the top shows the current versus time. The negative maxima correspond to the current moving to the left. The positive maxima correspond to current moving to the right. The current alternates regularly and smoothly between these two maxima.

Devices that use AC include vacuum cleaners, fans, power tools, hair dryers, and countless others. These devices obtain the power they require when you plug them into a wall socket. The wall socket is connected to the power grid that provides an alternating potential (AC potential). When your device is plugged in, the AC potential pushes charges back and forth in the circuit of the device, creating an alternating current.

Many devices, however, use DC, such as computers, cell phones, flashlights, and cars. One source of DC is a battery, which provides a constant potential (DC potential) between its terminals. With your device connected to a battery, the DC potential pushes charge in one direction through the circuit of your device, creating a DC current. Another way to produce DC current is by using a transformer, which converts AC potential to DC potential. Small transformers that you can plug into a wall socket are used to charge up your laptop, cell phone, or other electronic device. People generally call this a *charger* or a *battery*, but it is a transformer that transforms AC voltage into DC voltage. The next time someone asks to borrow your laptop charger, tell them that you don't have a laptop charger, but that they may borrow your converter.



WORKED EXAMPLE

Current in a Lightning Strike

A lightning strike can transfer as many as 10^{20} electrons from the cloud to the ground. If the strike lasts 2 ms, what is the average electric current in the lightning?

STRATEGY

Use the definition of current, $I = \frac{\Delta Q}{\Delta t}$. The charge ΔQ from 10^{20} electrons is $\Delta Q = ne$, where $n = 10^{20}$ is the number of electrons and $e = -1.60 \times 10^{-19} \text{ C}$ is the charge on the electron. This gives

$$\Delta Q = 10^{20} \times (-1.60 \times 10^{-19} \text{ C}) = -16.0 \text{ C}.$$

19.2

The time $\Delta t = 2 \times 10^{-3} \text{ s}$ is the duration of the lightning strike.

Solution

The current in the lightning strike is

$$\begin{aligned} I &= \frac{\Delta Q}{\Delta t} \\ &= \frac{-16.0 \text{ C}}{2 \times 10^{-3} \text{ s}} \\ &= -8 \text{ kA}. \end{aligned}$$

19.3

Discussion

The negative sign reflects the fact that electrons carry the negative charge. Thus, although the electrons flow from the cloud to the ground, the positive current is defined to flow from the ground to the cloud.



WORKED EXAMPLE

Average Current to Charge a Capacitor

In a circuit containing a capacitor and a resistor, it takes 1 min to charge a $16\text{ }\mu\text{F}$ capacitor by using a 9-V battery. What is the average current during this time?

STRATEGY

We can determine the charge on the capacitor by using the definition of capacitance: $C = \frac{Q}{V}$. When the capacitor is charged by a 9-V battery, the voltage across the capacitor will be $V = 9\text{ V}$. This gives a charge of

$$\begin{aligned} C &= \frac{Q}{V} \\ Q &= CV. \end{aligned}$$

19.4

By inserting this expression for charge into the equation for current, $I = \frac{\Delta Q}{\Delta t}$, we can find the average current.

Solution

The average current is

$$\begin{aligned} I &= \frac{\Delta Q}{\Delta t} \\ &= \frac{CV}{\Delta t} \\ &= \frac{(16 \times 10^{-6}\text{ F})(9\text{ V})}{60\text{ s}} \\ &= 2.4 \times 10^{-6}\text{ A} \\ &= 2.4\text{ }\mu\text{A}. \end{aligned}$$

19.5

Discussion

This small current is typical of the current encountered in circuits such as this.

Practice Problems

- 10 nC of charge flows through a circuit in $3.0 \times 10^{-6}\text{ s}$. What is the current during this time?
 - The current passes through the circuit is $3.3 \times 10^{-3}\text{ A}$.
 - The current passes through the circuit is 30 A.
 - The current passes through the circuit is 33 A.
 - The current passes through the circuit is 0.3 A.
- How long would it take a 10-mA current to charge a capacitor with 5.0 mC?
 - 0.50 s
 - 5 ns
 - 0.50 ns
 - 50 μs

Resistance and Ohm's Law

As mentioned previously, electrical current in a wire is in many ways similar to water flowing through a pipe. The water current that can flow through a pipe is affected by obstacles in the pipe, such as clogs and narrow sections in the pipe. These obstacles slow down the flow of current through the pipe. Similarly, electrical current in a wire can be slowed down by many factors, including impurities in the metal of the wire or collisions between the charges in the material. These factors create a resistance to the electrical current. **Resistance** is a description of how much a wire or other electrical component opposes the flow of charge through it. In the 19th century, the German physicist Georg Simon Ohm (1787–1854) found experimentally that current through a conductor is proportional to the voltage drop across a current-carrying conductor.

$$I \propto V$$

The constant of proportionality is the resistance R of the material, which leads to

$$V = IR(1.3).$$

This relationship is called **Ohm's law**. It can be viewed as a cause-and-effect relationship, with voltage being the cause and the current being the effect. Ohm's law is an empirical law like that for friction, which means that it is an experimentally observed phenomenon. The units of resistance are volts per ampere, or V/A. We call a V/A an *ohm*, which is represented by the uppercase Greek letter omega (Ω). Thus,

$$1 \Omega = 1 \text{ V/A}(1.4).$$

Ohm's law holds for most materials and at common temperatures. At very low temperatures, resistance may drop to zero (superconductivity). At very high temperatures, the thermal motion of atoms in the material inhibits the flow of electrons, increasing the resistance. The many substances for which Ohm's law holds are called **ohmic**. Ohmic materials include good conductors like copper, aluminum, and silver, and some poor conductors under certain circumstances. The resistance of ohmic materials remains essentially the same for a wide range of voltage and current.



WATCH PHYSICS

Introduction to Electricity, Circuits, Current, and Resistance

This video presents Ohm's law and shows a simple electrical circuit. The speaker uses the analogy of pressure to describe how electric potential makes charge move. He refers to electric potential as *electric pressure*. Another way of thinking about electric potential is to imagine that lots of particles of the same sign are crowded in a small, confined space. Because these charges have the same sign (they are all positive or all negative), each charge repels the others around it. This means that lots of charges are constantly being pushed towards the outside of the space. A complete electric circuit is like opening a door in the small space: Whichever particles are pushed towards the door now have a way to escape. The higher the electric potential, the harder each particle pushes against the others.

GRASP CHECK

If, instead of a single resistor R , two resistors each with resistance R are drawn in the circuit diagram shown in the video, what can you say about the current through the circuit?

- The amount of current through the circuit must decrease by half.
- The amount of current through the circuit must increase by half.
- The current must remain the same through the circuit.
- The amount of current through the circuit would be doubled.

Virtual Physics

Ohm's Law

[Click to view content \(http://www.openstax.org/l/28ohms_law\)](http://www.openstax.org/l/28ohms_law)

This simulation mimics a simple circuit with batteries providing the voltage source and a resistor connected across the batteries. See how the current is affected by modifying the resistance and/or the voltage. Note that the resistance is modeled as an element containing small *scattering centers*. These represent impurities or other obstacles that impede the passage of the current.

GRASP CHECK

In a circuit, if the resistance is left constant and the voltage is doubled (for example, from 3 V to 6 V), how does the current change? Does this conform to Ohm's law?

- The current will get doubled. This conforms to Ohm's law as the current is proportional to the voltage.
- The current will double. This does not conform to Ohm's law as the current is proportional to the voltage.

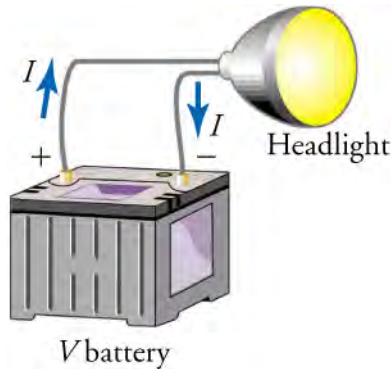
- c. The current will increase by half. This conforms to Ohm's law as the current is proportional to the voltage.
- d. The current will decrease by half. This does not conform to Ohm's law as the current is proportional to the voltage.



WORKED EXAMPLE

Resistance of a Headlight

What is the resistance of an automobile headlight through which 2.50 A flows when 12.0 V is applied to it?



STRATEGY

Ohm's law tells us $V_{\text{headlight}} = IR_{\text{headlight}}$. The voltage drop in going through the headlight is just the voltage rise supplied by the battery, $V_{\text{headlight}} = V_{\text{battery}}$. We can use this equation and rearrange Ohm's law to find the resistance $R_{\text{headlight}}$ of the headlight.

Solution

Solving Ohm's law for the resistance of the headlight gives

$$\begin{aligned} V_{\text{headlight}} &= IR_{\text{headlight}} \\ V_{\text{battery}} &= IR_{\text{headlight}} \\ R_{\text{headlight}} &= \frac{V_{\text{battery}}}{I} = \frac{12 \text{ V}}{2.5 \text{ A}} = 4.8 \, \Omega. \end{aligned}$$

19.6

Discussion

This is a relatively small resistance. As we will see below, resistances in circuits are commonly measured in kW or MW.



WORKED EXAMPLE

Determine Resistance from Current-Voltage Graph

Suppose you apply several different voltages across a circuit and measure the current that runs through the circuit. A plot of your results is shown in [Figure 19.7](#). What is the resistance of the circuit?

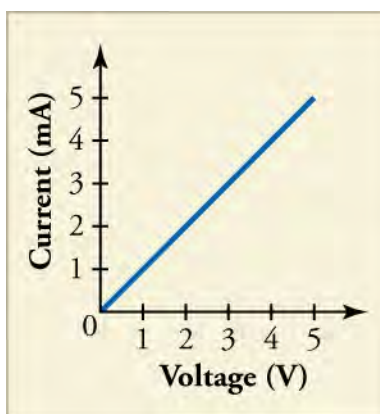


Figure 19.7 The line shows the current as a function of voltage. Notice that the current is given in milliamperes. For example, at 3 V, the current is 0.003 A, or 3 mA.

STRATEGY

The plot shows that current is proportional to voltage, which is Ohm's law. In Ohm's law ($V = IR$), the constant of proportionality is the resistance R . Because the graph shows current as a function of voltage, we have to rearrange Ohm's law in that form: $I = \frac{V}{R} = \frac{1}{R} \times V$. This shows that the slope of the line of I versus V is $\frac{1}{R}$. Thus, if we find the slope of the line in [Figure 19.7](#), we can calculate the resistance R .

Solution

The slope of the line is the *rise* divided by the *run*. Looking at the lower-left square of the grid, we see that the line rises by 1 mA (0.001 A) and runs over a voltage of 1 V. Thus, the slope of the line is

$$\text{slope} = \frac{0.001 \text{ A}}{1 \text{ V.}} \quad \boxed{19.7}$$

Equating the slope with $\frac{1}{R}$ and solving for R gives

$$\begin{aligned} \frac{1}{R} &= \frac{0.001 \text{ A}}{1} \\ R &= \frac{1 \text{ V}}{0.001 \text{ A}} = 1,000 \, \Omega \end{aligned} \quad \boxed{19.8}$$

or 1 k-ohm.

Discussion

This resistance is greater than what we found in the previous example. Resistances such as this are common in electric circuits, as we will discover in the next section. Note that if the line in [Figure 19.7](#) were not straight, then the material would not be ohmic and we would not be able to use Ohm's law. Materials that do not follow Ohm's law are called **nonohmic**.

Practice Problems

3. If you double the voltage across an ohmic resistor, how does the current through the resistor change?
 - a. The current will double.
 - b. The current will increase by half.
 - c. The current will decrease by half.
 - d. The current will decrease by a factor of two.
4. The current through a $10 \, \Omega$ resistor is 0.025 A. What is the voltage drop across the resistor?
 - a. 2.5 mV
 - b. 0.25 V
 - c. 2.5 V
 - d. 0.25 mV

Check Your Understanding

5. What is electric current?
 - a. Electric current is the electric charge that is at rest.
 - b. Electric current is the electric charge that is moving.
 - c. Electric current is the electric charge that moves only from the positive terminal of a battery to the negative terminal.
 - d. Electric current is the electric charge that moves only from a region of lower potential to higher potential.
6. What is an ohmic material?
 - a. An ohmic material is a material that obeys Ohm's law.
 - b. An ohmic material is a material that does not obey Ohm's law.
 - c. An ohmic material is a material that has high resistance.
 - d. An ohmic material is a material that has low resistance.
7. What is the difference between direct current and alternating current?
 - a. Direct current flows continuously in every direction whereas alternating current flows in one direction.
 - b. Direct current flows continuously in one direction whereas alternating current reverses its direction at regular time intervals.
 - c. Both direct and alternating current flow in one direction but the magnitude of direct current is fixed whereas the magnitude of alternating current changes at regular intervals of time.
 - d. Both direct and alternating current changes its direction of flow but the magnitude of direct current is fixed whereas the magnitude of alternating current changes at regular intervals of time.

19.2 Series Circuits

Section Learning Objectives

By the end of this section, you will be able to do the following:

- Interpret circuit diagrams and diagram basic circuit elements
- Calculate equivalent resistance of resistors in series and apply Ohm's law to resistors in series and apply Ohm's law to resistors in series

Section Key Terms

circuit diagram electric circuit equivalent resistance

in series resistor steady state

Electric Circuits and Resistors

Now that we understand the concept of electric current, let's see what we can do with it. As you are no doubt aware, the modern lifestyle relies heavily on electrical devices. These devices contain ingenious **electric circuits**, which are complete, closed pathways through which electric current flows. Returning to our water analogy, an electric circuit is to electric charge like a network of pipes is to water: The electric circuit guides electric charge from one point to the next, running the charge through various devices along the way to extract work or information.

Electric circuits are made from many materials and cover a huge range of sizes, as shown in [Figure 19.8](#). Computers and cell phones contain electric circuits whose features can be as small as roughly a billionth of a meter (a nanometer, or 10^{-9} m). The pathways that guide the current in these devices are made by ultraprecise chemical treatments of silicon or other semiconductors. Large power systems, on the other hand, contain electric circuits whose features are on the scale of meters. These systems carry such large electric currents that their physical dimensions must be relatively large.

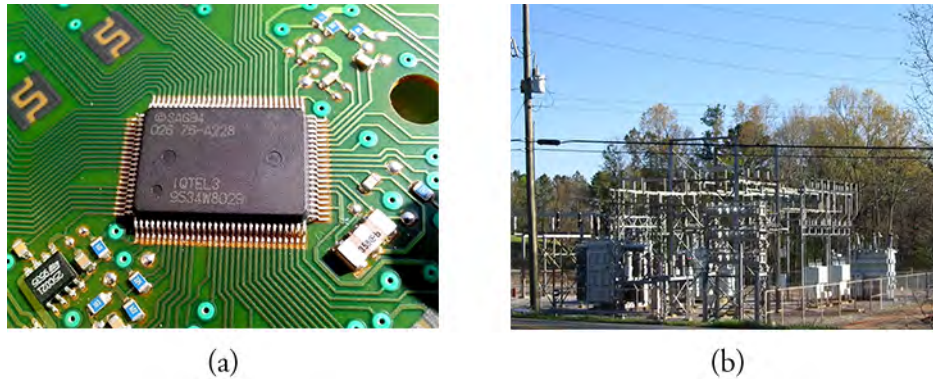


Figure 19.8 The photo on the left shows a *chip* that contains complex integrated electric circuitry. Chips such as this are at the heart of devices such as computers and cell phones. The photograph on the right shows some typical electric circuitry required for high-power electric power transmission.

The pathways that form electric circuits are made from a conducting material, normally a metal in macroscopic circuits. For example, copper wires inside your school building form the electrical circuits that power lighting, projectors, screens, speakers, etc. To represent an electric circuit, we draw **circuit diagrams**. We use lines and symbols to represent the elements in the circuit. A simple electric circuit diagram is shown on the left side of [Figure 19.9](#). On the right side is an analogous water circuit, which we discuss below.

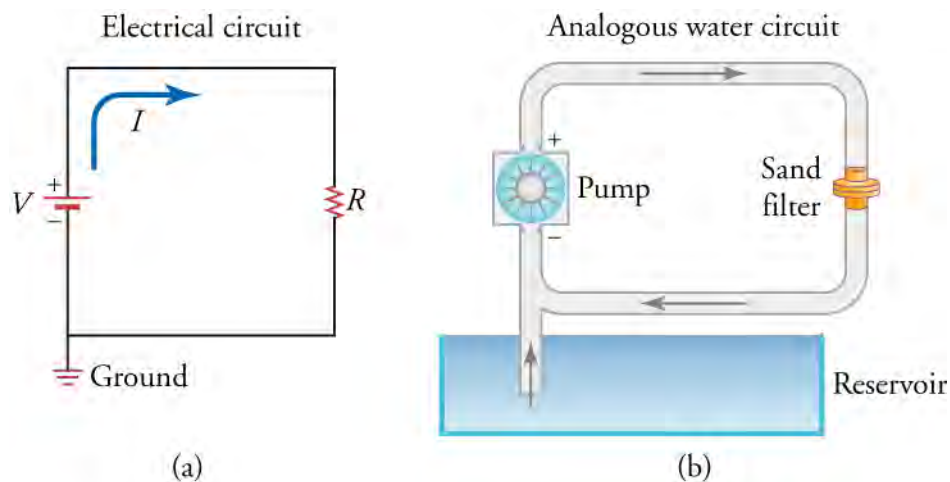


Figure 19.9 On the left is a circuit diagram showing a battery (in red), a resistor (black zigzag element), and the current I . On the right is the analogous water circuit. The pump is like the battery, the sand filter is like the resistor, the water current is like the electrical current, and the reservoir is like the ground.

There are many different symbols that scientists and engineers use in circuit diagrams, but we will focus on four main symbols: the wire, the battery or voltage source, resistors, and the ground. The thin black lines in the electric circuit diagram represent the pathway that the electric charge must follow. These pathways are assumed to be perfect conductors, so electric charge can move along these pathways without losing any energy. In reality, the wires in circuits are not perfect, but they come close enough for our purposes.

The zigzag element labeled R is a **resistor**, which is a circuit element that provides a known resistance. Macroscopic resistors are often color coded to indicate their resistance, as shown in [Figure 19.10](#).

The red element in [Figure 19.9](#) is a battery, with its positive and negative terminals indicated; the longer line represents the positive terminal of the battery, and the shorter line represents the negative terminal. Note that the battery icon is not always colored red; this is done in [Figure 19.9](#) just to make it easy to identify.

Finally, the element labeled *ground* on the lower left of the circuit indicates that the circuit is connected to Earth, which is a large, essentially neutral object containing an infinite amount of charge. Among other things, the ground determines the potential of the negative terminal of the battery. Normally, the potential of the ground is defined to be zero: $V_{\text{ground}} \equiv 0$. This

means that the entire lower wire in [Figure 19.10](#) is at a voltage of zero volts.



Figure 19.10 Some typical resistors. The color bands indicate the value of the resistance of each resistor.

The electric current in [Figure 19.9](#) is indicated by the blue line labeled I . The arrow indicates the direction in which positive charge would flow in this circuit. Recall that, in metals, electrons are mobile charge carriers, so negative charges actually flow in the opposite direction around this circuit (i.e., counterclockwise). However, we draw the current to show the direction in which positive charge would move.

On the right side of [Figure 19.9](#) is an analogous water circuit. Water at a higher pressure leaves the top of the pump, which is like charges leaving the positive terminal of the battery. The water travels through the pipe, like the charges traveling through the wire. Next, the water goes through a sand filter, which heats up as the water squeezes through. This step is like the charges going through the resistor. When charges flow through a resistor, they do work to heat up the resistor. After flowing through the sand filter, the water has converted its potential energy into heat, so it is at a lower pressure. Likewise, the charges exiting the resistor have converted their potential energy into heat, so they are at a lower voltage. Recall that voltage is just potential energy per charge. Thus, water pressure is analogous to electric potential energy (i.e., voltage). Coming back to the water circuit again, we see that the water returns to the bottom of the pump, which is like the charge returning to the negative terminal of the battery. The water pump uses a source of energy to pump the water back up to a high pressure again, giving it the pressure required to go through the circuit once more. The water pump is like the battery, which uses chemical energy to increase the voltage of the charge up to the level of the positive terminal.

The potential energy per charge at the positive terminal of the battery is the voltage rating of the battery. This voltage is like water pressure in the upper pipe. Just like a higher pressure forces water to move toward a lower pressure, a higher voltage forces electric charge to flow toward a lower voltage. The pump takes water at low pressure and does work on it, ejecting water at a higher pressure. Likewise, a battery takes charge at a low voltage, does work on it, and ejects charge at a higher voltage.

Note that the current in the water circuit of [Figure 19.9](#) is the same throughout the circuit. In other words, if we measured the number of water molecules passing a cross-section of the pipe per unit time at any point in the circuit, we would get the same answer no matter where in the circuit we measured. The same is true of the electrical circuit in the same figure. The electric current is the same at all points in this circuit, including inside the battery and in the resistor. The electric current neither speeds up in the wires nor slows down in the resistor. This would create points where too much or too little charge would be bunched up. Thus, the current is the same at all points in the circuit shown in [Figure 19.9](#).

Although the current is the same everywhere in both the electric and water circuits, the voltage or water pressure changes as you move through the circuits. In the water circuit, the water pressure at the pump outlet stays the same until the water goes through the sand filter, assuming no energy loss in the pipe. Likewise, the voltage in the electrical circuit is the same at all points in a given wire, because we have assumed that the wires are perfect conductors. Thus, as indicated by the constant red color of the upper wire in [Figure 19.11](#), the voltage throughout this wire is constant at $V = V_{\text{battery}}$. The voltage then drops as you go through the resistor, but once you reach the blue wire, the voltage stays at its new level of $V = 0$ all the way to the negative terminal of the battery (i.e., the blue terminal of the battery).

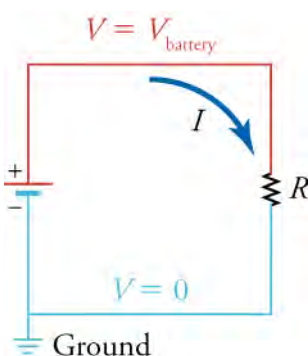


Figure 19.11 The voltage in the red wire is constant at $V = V_{\text{battery}}$ from the positive terminal of the battery to the top of the resistor. The voltage in the blue wire is constant at $V = V_{\text{ground}} = 0$ from the bottom of the resistor to the negative terminal of the battery.

If we go from the blue wire through the battery to the red wire, the voltage increases from $V = 0$ to $V = V_{\text{battery}}$. Likewise, if we go from the blue wire up through the resistor to the red wire, the voltage also goes from $V = 0$ to $V = V_{\text{battery}}$. Thus, using Ohm's law, we can write

$$V_{\text{resistor}} = V_{\text{battery}} = IR.$$

Note that V_{resistor} is measured from the bottom of the resistor to the top, meaning that the top of the resistor is at a higher voltage than the bottom of the resistor. Thus, current flows from the top of the resistor or higher voltage to the bottom of the resistor or lower voltage.

Virtual Physics

Battery-Resistor Circuit

[Click to view content \(http://www.openstax.org/l/21batteryresist\)](http://www.openstax.org/l/21batteryresist)

Use this simulation to better understand how resistance, voltage, and current are related. The simulation shows a battery with a resistor connected between the terminals of the battery, as in the previous figure. You can modify the battery voltage and the resistance. The simulation shows how electrons react to these changes. It also shows the atomic cores in the resistor and how they are excited and heat up as more current goes through the resistor.

Draw the circuit diagram for the circuit, being sure to draw an arrow indicating the direction of the current. Now pick three spots along the wire. Without changing the settings, allow the simulation to run for 20 s while you count the number of electrons passing through that spot. Record the number on the circuit diagram. Now do the same thing at each of the other two spots in the circuit. What do you notice about the number of charges passing through each spot in 20 s? Remember that that current is defined as the rate that charges flow through the circuit. What does this mean about the current through the entire circuit?

GRASP CHECK

With the voltage slider, give the battery a positive voltage. Notice that the electrons are spaced farther apart in the left wire than they are in the right wire. How does this reflect the voltage in the two wires?

- The voltage between static charges is directly proportional to the distance between them.
- The voltage between static charges is directly proportional to square of the distance between them.
- The voltage between static charges is inversely proportional to the distance between them.
- The voltage between static charges is inversely proportional to square of the distance between them.

Other possible circuit elements include capacitors and switches. These are drawn as shown on the left side of [Figure 19.12](#). A switch is a device that opens and closes the circuit, like a light switch. It is analogous to a valve in a water circuit, as shown on the right side of [Figure 19.12](#). With the switch open, no current passes through the circuit. With the switch closed, it becomes part of the wire, so the current passes through it with no loss of voltage.

The capacitor is labeled C on the left of [Figure 19.12](#). A capacitor in an electrical circuit is analogous to a flexible membrane in a

water circuit. When the switch is closed in the circuit of [Figure 19.12](#), the battery forces electrical current to flow toward the capacitor, charging the upper capacitor plate with positive charge. As this happens, the voltage across the capacitor plates increases. This is like the membrane in the water circuit: When the valve is opened, the pump forces water to flow toward the membrane, making it stretch to store the excess water. As this happens, the pressure behind the membrane increases.

Now if we open the switch, the capacitor holds the voltage between its plates because the charges have nowhere to go. Likewise, if we close the valve, the water has nowhere to go and the membrane maintains the water pressure in the pipe between itself and the valve.

If the switch is closed for a long time in the electric circuit or if the valve is open for a long time in the water circuit, the current will eventually stop flowing because the capacitor or the membrane will have become completely charged. Each circuit is now in the **steady state**, which means that its characteristics do not change over time. In this case, the steady state is characterized by zero current, and this does not change as long as the switch or valve remains in the same position. In the steady state, no electrical current passes through the capacitor, and no water current passes through the membrane. The voltage difference between the capacitor plates will be the same as the battery voltage. In the water circuit, the pressure behind the membrane will be the same as the pressure created by the pump.

Although the circuit in [Figure 19.12](#) may seem a bit pointless because all that happens when the switch is closed is that the capacitor charges up, it does show the capacitor's ability to store charge. Thus, the capacitor serves as a reservoir for charge. This property of capacitors is used in circuits in many ways. For example, capacitors are used to power circuits while batteries are being charged. In addition, capacitors can serve as filters. To understand this, let's go back to the water analogy. Suppose you have a water hose and are watering your garden. Your friend thinks he's funny, and *kinks* the hose. While the hose is kinked, you experience no water flow. When he lets go, the water starts flowing again. If he does this really fast, you experience water-no water-water-no water, and that's really no way to water your garden. Now imagine that the hose is filling up a big bucket, and you are watering from the bottom of the bucket. As long as you had water in your bucket to begin with and your friend doesn't kink the water hose for too long, you would be able to water your garden without the interruptions. Your friend kinking the water hose is *filtered* by the big bucket's supply of water, so it does not impact your ability to water the garden. We can think of the interruptions in the current (be it water or electrical current) as *noise*. Capacitors act in an analogous way as the water bucket to help filter out the noise. Capacitors have so many uses that it is very rare to find an electronic circuit that does not include some capacitors.

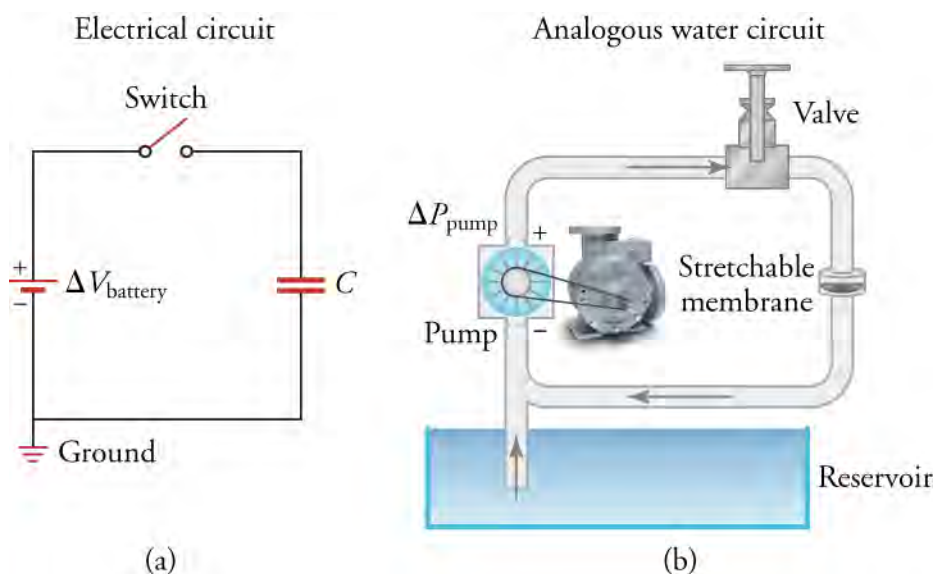


Figure 19.12 On the left is an electrical circuit containing a battery, a switch, and a capacitor. On the left is the analogous water circuit with a pump, a valve, and a stretchable membrane. The pump is like the battery, the valve is like the switch, and the stretchable membrane is like the capacitor. When the switch is closed, electrical current flows as the capacitor charges and its voltage increases. Likewise in the water circuit, when the valve is open, water current flows as the stretchable membrane stretches and the water pressure behind it increases.

WORK IN PHYSICS

What It Takes to be an Electrical Engineer

Physics is used in a wide variety of fields. One field that requires a very thorough knowledge of physics is electrical engineering. An electrical engineer can work on anything from the large-scale power systems that provide power to big cities to the nanoscale electronic circuits that are found in computers and cell phones (Figure 19.13).

In working with power companies, you can be responsible for maintaining the power grid that supplies electrical power to large areas. Although much of this work is done from an office, it is common to be called in for overtime duty after storms or other natural events. Many electrical engineers enjoy this part of the job, which requires them to race around the countryside repairing high-voltage transformers and other equipment. However, one of the more unpleasant aspects of this work is to remove the carcasses of unfortunate squirrels or other animals that have wandered into the transformers.

Other careers in electrical engineering can involve designing circuits for cell phones, which requires cramming some 10 billion transistors into an electronic chip the size of your thumbnail. These jobs can involve much work with computer simulations and can also involve fields other than electronics. For example, the 1-m-diameter lenses that are used to make these circuits (as of 2015) are so precise that they are shipped from the manufacture to the chip fabrication plant in temperature-controlled trucks to ensure that they are held within a certain temperature range. If they heat up or cool down too much, they deform ever so slightly, rendering them useless for the ultrahigh precision photolithography required to manufacture these chips.

In addition to a solid knowledge of physics, electrical engineers must above all be practical. Consider, for example, how one corporation managed to launch some anti-ballistic missiles at the White Sands Missile Test Range in New Mexico in the 1960s. Before launch, the skin of the missile had to be at the same voltage as the rail from which it was launched. The rail was connected to the ground by a large copper wire connected to a stake driven into the sandy earth. The missile, however, was connected by an umbilical cord to the equipment in the control shed a few meters away, which was grounded via a different grounding circuit. Before launching the missile, the voltage difference between the missile skin and the rail had to be less than 2.5 V. After an especially dry spell of weather, the missile could not be launched because the voltage difference stood at 5 V. A group of electrical engineers, including the father of your author, stood around pondering how to reduce the voltage difference. The situation was resolved when one of the engineers realized that urine contains electrolytes and conducts electricity quite well. With that, the four engineers quickly resolved the problem by urinating on the rail spike. The voltage difference immediately dropped to below 2.5 V and the missile was launched on schedule.

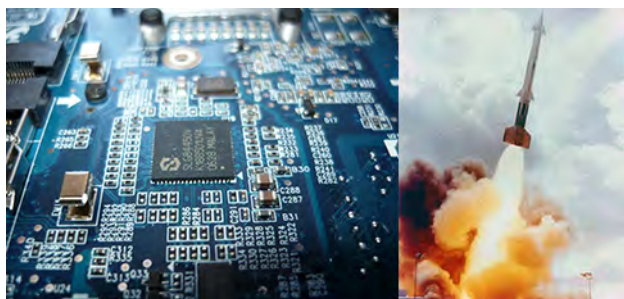


Figure 19.13 The systems that electrical engineers work on range from microprocessor circuits (left) to missile systems (right).

Virtual Physics

[Click to view content \(http://www.openstax.org/l/21phetcirconstri\)](http://www.openstax.org/l/21phetcirconstri)

Amuse yourself by building circuits of all different shapes and sizes. This simulation provides you with various standard circuit elements, such as batteries, AC voltage sources, resistors, capacitors, light bulbs, switches, etc. You can connect these in any configuration you like and then see the result.

Build a circuit that starts with a resistor connected to a capacitor. Connect the free side of the resistor to the positive terminal of a battery and the free side of the capacitor to the negative terminal of the battery. Click the *reset dynamics* button to see how the current flows starting with no charge on the capacitor. Now right click on the resistor to change its

value. When you increase the resistance, does the circuit reach the steady state more rapidly or more slowly?

GRASP CHECK

When the circuit has reached the steady state, how does the voltage across the capacitor compare to the voltage of the battery? What is the voltage across the resistor?

- The voltage across the capacitor is greater than the voltage of the battery. In the steady state, no current flows through this circuit, so the voltage across the resistor is zero.
- The voltage across the capacitor is smaller than the voltage of the battery. In the steady state, finite current flows through this circuit, so the voltage across the resistor is finite.
- The voltage across the capacitor is the same as the voltage of the battery. In the steady state, no current flows through this circuit, so the voltage across the resistor is zero.
- The voltage across the capacitor is the same as the voltage of the battery. In the steady state, finite current flows through this circuit, so the voltage across the resistor is finite.

Resistors in Series and Equivalent Resistance

Now that we have a basic idea of how electrical circuits work, let's see what happens in circuits with more than one circuit element. In this section, we look at resistors in series. Components connected **in series** are connected one after the other in the same branch of a circuit, such as the resistors connected in series on the left side of [Figure 19.14](#).

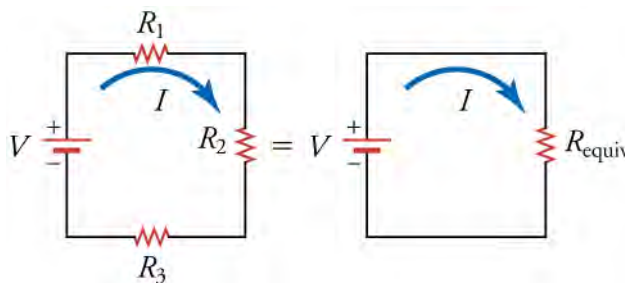


Figure 19.14 On the left is an electric circuit with three resistors R_1 , R_2 , and R_3 connected in series. On the right is an electric circuit with one resistor R_{equiv} that is equivalent to the combination of the three resistors R_1 , R_2 , and R_3 .

We will now try to find a single resistance that is equivalent to the three resistors in series on the left side of [Figure 19.14](#). An **equivalent resistor** is a resistor that has the same resistance as the combined resistance of a set of other resistors. In other words, the same current will flow through the left and right circuits in [Figure 19.14](#) if we use the equivalent resistor in the right circuit.

According to Ohm's law, the voltage drop V across a resistor when a current flows through it is $V = IR$ where I is the current in amperes (A) and R is the resistance in ohms (Ω). Another way to think of this is that V is the voltage necessary to make a current I flow through a resistance R . Applying Ohm's law to each resistor on the left circuit of [Figure 19.14](#), we find that the voltage drop across R_1 is $V_1 = IR_1$, that across R_2 is $V_2 = IR_2$, and that across R_3 is $V_3 = IR_3$. The sum of these voltages equals the voltage output of the battery, that is

$$V_{\text{battery}} = V_1 + V_2 + V_3.$$

19.9

You may wonder why voltages must add up like this. One way to understand this is to go once around the circuit and add up the successive changes in voltage. If you do this around a loop and get back to the starting point, the total change in voltage should be zero, because you end up at the same place that you started. To better understand this, consider the analogy of going for a stroll through some hilly countryside. If you leave your car and walk around, then come back to your car, the total height you gained in your stroll must be the same as the total height you lost, because you end up at the same place as you started. Thus, the gravitational potential energy you gain must be the same as the gravitational potential energy you lose. The same reasoning holds for voltage in going around an electric circuit. Let's apply this reasoning to the left circuit in [Figure 19.14](#). We start just below the battery and move up through the battery, which contributes a voltage *gain* of V_{battery} . Next, we go through the resistors. The voltage *drops* by V_1 in going through resistor R_1 , by V_2 in going through resistor R_2 , and by V_3 in going through

resistor R_3 . After going through resistor R_3 , we arrive back at the starting point, so we add up these four changes in voltage and set the sum equal to zero. This gives

$$0 = V_{\text{battery}} - V_1 - V_2 - V_3. \quad 19.10$$

which is the same as the previous equation. Note that the minus signs in front of V_1 , V_2 , and V_3 are because these are voltage *drops*, whereas V_{battery} is a voltage *rise*.

Ohm's law tells us that $V_1 = IR_1$, $V_2 = IR_2$, and $V_3 = IR_3$. Inserting these values into equation $V_{\text{battery}} = V_1 + V_2 + V_3$ gives

$$\begin{aligned} V_{\text{battery}} &= IR_1 + IR_2 + IR_3 \\ &= I(R_1 + R_2 + R_3). \end{aligned} \quad 19.11$$

Applying this same logic to the right circuit in [Figure 19.14](#) gives

$$V_{\text{battery}} = IR_{\text{equiv}}. \quad 19.12$$

Dividing the equation $V_{\text{battery}} = I(R_1 + R_2 + R_3)$ by $V_{\text{battery}} = IR_{\text{equiv}}$, we get

$$\begin{aligned} \frac{V_{\text{battery}}}{V_{\text{battery}}} &= \frac{I(R_1 + R_2 + R_3)}{IR_{\text{equiv}}} \\ R_{\text{equiv}} &= R_1 + R_2 + R_3. \end{aligned} \quad 19.13$$

This shows that the equivalent resistance for a series of resistors is simply the sum of the resistances of each resistor. In general, N resistors connected in series can be replaced by an equivalent resistor with a resistance of

$$R_{\text{equiv}} = R_1 + R_2 + \cdots + R_N.$$



WATCH PHYSICS

Resistors in Series

This video discusses the basic concepts behind interpreting circuit diagrams and then shows how to calculate the equivalent resistance for resistors in series.

[Click to view content \(https://www.openstax.org/l/o2resistseries\)](https://www.openstax.org/l/o2resistseries)

GRASP CHECK

True or false—In a circuit diagram, we can assume that the voltage is the same at every point in a given wire.

- false
- true



WORKED EXAMPLE

Calculation of Equivalent Resistance

In the left circuit of the previous figure, suppose the voltage rating of the battery is 12 V, and the resistances are $R_1 = 1.0 \, \Omega$, $R_2 = 6.0 \, \Omega$, and $R_3 = 13 \, \Omega$. (a) What is the equivalent resistance? (b) What is the current through the circuit?

STRATEGY FOR (A)

Use the equation for the equivalent resistance of resistors connected in series. Because the circuit has three resistances, we only need to keep three terms, so it takes the form

$$R_{\text{equiv}} = R_1 + R_2 + R_3. \quad 19.14$$

Solution for (a)

Inserting the given resistances into the equation above gives

$$\begin{aligned}
 R_{\text{equiv}} &= R_1 + R_2 + R_3 \\
 &= 1.0\ \Omega + 6.0\ \Omega + 13\ \Omega \\
 &= 20\ \Omega.
 \end{aligned}$$

19.15

Discussion for (a)

We can thus replace the three resistors R_1 , R_2 , and R_3 with a single $20\text{-}\Omega$ resistor.

STRATEGY FOR (B)

Apply Ohm's law to the circuit on the right side of the previous figure with the equivalent resistor of $20\ \Omega$.

Solution for (b)

The voltage drop across the equivalent resistor must be the same as the voltage rise in the battery. Thus, Ohm's law gives

$$\begin{aligned}
 V_{\text{battery}} &= IR_{\text{equiv}} \\
 I &= \frac{V_{\text{battery}}}{R_{\text{equiv}}} \\
 &= \frac{12\ \text{V}}{20\ \Omega} \\
 &= 0.60\ \text{A}.
 \end{aligned}$$

19.16

Discussion for (b)

To check that this result is reasonable, we calculate the voltage drop across each resistor and verify that they add up to the voltage rating of the battery. The voltage drop across each resistor is

$$\begin{aligned}
 V_1 &= IR_1 = (0.60\ \text{A})(1.0\ \Omega) = 0.60\ \text{V} \\
 V_2 &= IR_2 = (0.60\ \text{A})(6.0\ \Omega) = 3.6\ \text{V} \\
 V_3 &= IR_3 = (0.60\ \text{A})(13\ \Omega) = 7.8\ \text{V}.
 \end{aligned}$$

19.17

Adding these voltages together gives

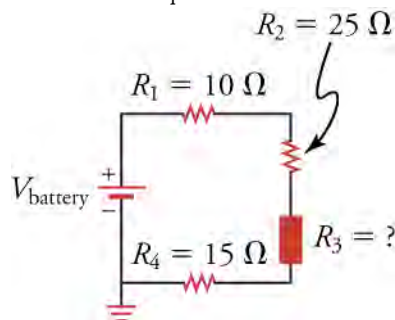
$$V_1 + V_2 + V_3 = 0.60\ \text{V} + 3.6\ \text{V} + 7.8\ \text{V} = 12\ \text{V}.$$

19.18

which is the voltage rating of the battery.

**WORKED EXAMPLE****Determine the Unknown Resistance**

The circuit shown in figure below contains three resistors of known value and a third element whose resistance R_3 is unknown. Given that the equivalent resistance for the entire circuit is $150\ \Omega$, what is the resistance R_3 ?

**STRATEGY**

The four resistances in this circuit are connected in series, so we know that they must add up to give the equivalent resistance. We can use this to find the unknown resistance R_3 .

Solution

For four resistances in series, the equation for the equivalent resistance of resistors in series takes the form

$$R_{\text{equiv}} = R_1 + R_2 + R_3 + R_4.$$

19.19

Solving for R_3 and inserting the known values gives

$$\begin{aligned} R_3 &= R_{\text{equiv}} - R_1 - R_2 - R_4 \\ &= 150\ \Omega - 10\ \Omega - 25\ \Omega - 15\ \Omega \\ &= 100\ \Omega. \end{aligned}$$

19.20

Discussion

The equivalent resistance of a circuit can be measured with an ohmmeter. This is sometimes useful for determining the effective resistance of elements whose resistance is not marked on the element.

Check your Understanding

8.



Figure 19.15

What circuit element is represented in the figure below?

- a battery
- a resistor
- a capacitor
- an inductor

9. How would a diagram of two resistors connected in series appear?

-
-
-
-

19.3 Parallel Circuits

Section Learning Objectives

By the end of this section, you will be able to do the following:

- Interpret circuit diagrams with parallel resistors
- Calculate equivalent resistance of resistor combinations containing series and parallel resistors

Section Key Terms

in parallel

Resistors in Parallel

In the previous section, we learned that resistors in series are resistors that are connected one after the other. If we instead combine resistors by connecting them next to each other, as shown in [Figure 19.16](#), then the resistors are said to be connected *in parallel*. Resistors are **in parallel** when both ends of each resistor are connected directly together.

Note that the tops of the resistors are all connected to the same wire, so the voltage at the top of the each resistor is the same. Likewise, the bottoms of the resistors are all connected to the same wire, so the voltage at the bottom of each resistor is the same. This means that the voltage drop across each resistor is the same. In this case, the voltage drop is the voltage rating V of the battery, because the top and bottom wires connect to the positive and negative terminals of the battery, respectively.

Although the voltage drop across each resistor is the same, we cannot say the same for the current running through each resistor. Thus, I_1 , I_2 , and I_3 are not necessarily the same, because the resistors R_1 , R_2 , and R_3 do not necessarily have the same

resistance.

Note that the three resistors in [Figure 19.16](#) provide three different paths through which the current can flow. This means that the equivalent resistance for these three resistors must be less than the smallest of the three resistors. To understand this, imagine that the smallest resistor is the only path through which the current can flow. Now add on the alternate paths by connecting other resistors in parallel. Because the current has more paths to go through, the overall resistance (i.e., the equivalent resistance) will decrease. Therefore, the equivalent resistance must be less than the smallest resistance of the parallel resistors.

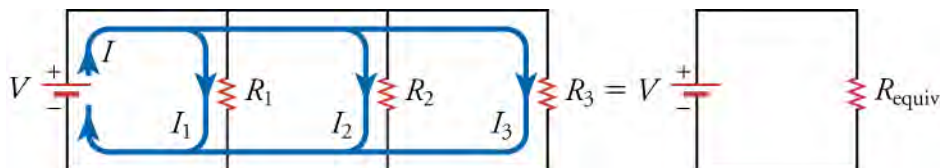


Figure 19.16 The left circuit diagram shows three resistors in parallel. The voltage V of the battery is applied across all three resistors. The currents that flow through each branch are not necessarily equal. The right circuit diagram shows an equivalent resistance that replaces the three parallel resistors.

To find the equivalent resistance R_{equiv} of the three resistors R_1 , R_2 , and R_3 , we apply Ohm's law to each resistor. Because the voltage drop across each resistor is V , we obtain

$$V = I_1 R_1, \quad V = I_2 R_2, \quad V = I_3 R_3 \quad 19.21$$

or

$$I_1 = \frac{V}{R_1}, \quad I_2 = \frac{V}{R_2}, \quad I_3 = \frac{V}{R_3}. \quad 19.22$$

We also know from conservation of charge that the three currents I_1 , I_2 , and I_3 must add up to give the current I that goes through the battery. If this were not true, current would have to be mysteriously created or destroyed somewhere in the circuit, which is physically impossible. Thus, we have

$$I = I_1 + I_2 + I_3. \quad 19.23$$

Inserting the expressions for I_1 , I_2 , and I_3 into this equation gives

$$I = \frac{V}{R_1} + \frac{V}{R_2} + \frac{V}{R_3} = V \left(\frac{1}{R_1} + \frac{1}{R_2} + \frac{1}{R_3} \right) \quad 19.24$$

or

$$V = I \left(\frac{1}{1/R_1 + 1/R_2 + 1/R_3} \right). \quad 19.25$$

This formula is just Ohm's law, with the factor in parentheses being the equivalent resistance.

$$V = I \left(\frac{1}{1/R_1 + 1/R_2 + 1/R_3} \right) = I R_{\text{equiv}}. \quad 19.26$$

Thus, the equivalent resistance for three resistors in parallel is

$$R_{\text{equiv}} = \frac{1}{1/R_1 + 1/R_2 + 1/R_3}. \quad 19.27$$

The same logic works for any number of resistors in parallel, so the general form of the equation that gives the equivalent resistance of N resistors connected in parallel is

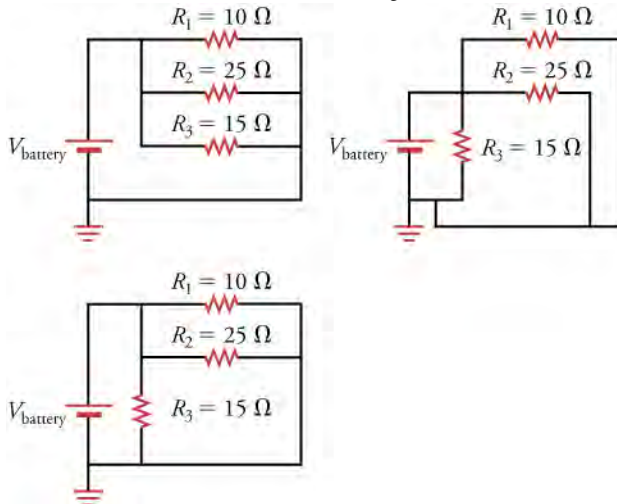
$$R_{\text{equiv}} = \frac{1}{1/R_1 + 1/R_2 + \cdots + 1/R_N}. \quad 19.28$$



WORKED EXAMPLE

Find the Current through Parallel Resistors

The three circuits below are equivalent. If the voltage rating of the battery is $V_{\text{battery}} = 3 \text{ V}$, what is the equivalent resistance of the circuit and what current runs through the circuit?

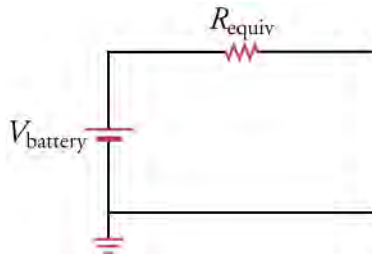


STRATEGY

The three resistors are connected in parallel and the voltage drop across them is V_{battery} . Thus, we can apply the equation for the equivalent resistance of resistors in parallel, which takes the form

$$R_{\text{equiv}} = \frac{1}{1/R_1 + 1/R_2 + 1/R_3}. \quad 19.29$$

The circuit with the equivalent resistance is shown below. Once we know the equivalent resistance, we can use Ohm's law to find the current in the circuit.



Solution

Inserting the given values for the resistance into the equation for equivalent resistance gives

$$\begin{aligned} R_{\text{equiv}} &= \frac{1}{1/R_1 + 1/R_2 + 1/R_3} \\ &= \frac{1}{1/10 \, \Omega + 1/25 \, \Omega + 1/15 \, \Omega} \\ &= 4.84 \, \Omega. \end{aligned} \quad 19.30$$

The current through the circuit is thus

$$\begin{aligned} V &= IR \\ I &= \frac{V}{R} \\ &= \frac{3 \text{ V}}{4.84 \, \Omega} \\ &= 0.62 \text{ A}. \end{aligned} \quad 19.31$$

Discussion

Although 0.62 A flows through the entire circuit, note that this current does not flow through each resistor. However, because

electric charge must be conserved in a circuit, the sum of the currents going through each branch of the circuit must add up to the current going through the battery. In other words, we cannot magically create charge somewhere in the circuit and add this new charge to the current. Let's check this reasoning by using Ohm's law to find the current through each resistor.

$$I_1 = \frac{V}{R_1} = \frac{3 \text{ V}}{10 \text{ } \Omega} = 0.30 \text{ A}$$

$$I_2 = \frac{V}{R_2} = \frac{3 \text{ V}}{25 \text{ } \Omega} = 0.12 \text{ A}$$

$$I_3 = \frac{V}{R_3} = \frac{3 \text{ V}}{15 \text{ } \Omega} = 0.20 \text{ A}$$

19.32

As expected, these currents add up to give 0.62 A, which is the total current found going through the equivalent resistor. Also, note that the smallest resistor has the largest current flowing through it, and vice versa.



WORKED EXAMPLE

Reasoning with Parallel Resistors

Without doing any calculation, what is the equivalent resistance of three identical resistors R in parallel?

STRATEGY

Three identical resistors R in parallel make three identical paths through which the current can flow. Thus, it is three times easier for the current to flow through these resistors than to flow through a single one of them.

Solution

If it is three times easier to flow through three identical resistors R than to flow through a single one of them, the equivalent resistance must be three times less: $R/3$.

Discussion

Let's check our reasoning by calculating the equivalent resistance of three identical resistors R in parallel. The equation for the equivalent resistance of resistors in parallel gives

$$\begin{aligned} R_{\text{equiv}} &= \frac{1}{1/R + 1/R + 1/R} \\ &= \frac{1}{3/R} \\ &= \frac{R}{3}. \end{aligned}$$

19.33

Thus, our reasoning was correct. In general, when more paths are available through which the current can flow, the equivalent resistance decreases. For example, if we have identical resistors R in parallel, the equivalent resistance would be $R/10$.

Practice Problems

10. Three resistors, 10, 20, and 30 Ω , are connected in parallel. What is the equivalent resistance?
 - a. The equivalent resistance is 5.5 Ω
 - b. The equivalent resistance is 60 Ω
 - c. The equivalent resistance is $6 \times 10^3 \text{ } \Omega$
 - d. The equivalent resistance is $6 \times 10^4 \text{ } \Omega$
11. If a 5-V drop occurs across R_1 , and R_1 is connected in parallel to R_2 , what is the voltage drop across R_2 ?
 - a. Voltage drop across is 0 V.
 - b. Voltage drop across is 2.5 V.
 - c. Voltage drop across is 5 V.
 - d. Voltage drop across is 10 V.

Resistors in Parallel and in Series

More complex connections of resistors are sometimes just combinations of series and parallel. Combinations of series and parallel resistors can be reduced to a single equivalent resistance by using the technique illustrated in [Figure 19.17](#). Various parts are identified as either series or parallel, reduced to their equivalents, and further reduced until a single resistance is left. The

process is more time consuming than difficult.

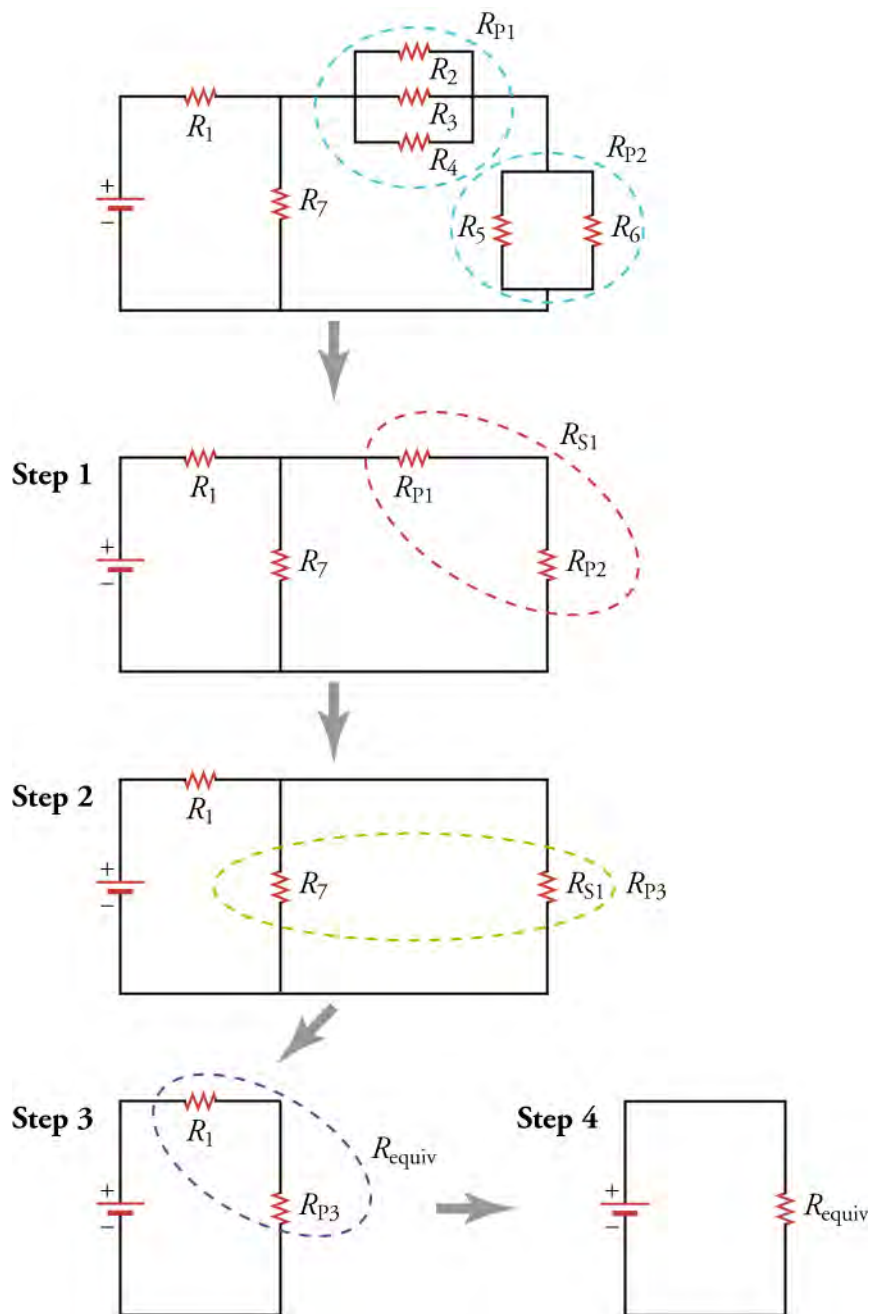


Figure 19.17 This combination of seven resistors has both series and parallel parts. Each is identified and reduced to an equivalent resistance, and these are further reduced until a single equivalent resistance is reached.

Let's work through the four steps in [Figure 19.17](#) to reduce the seven resistors to a single equivalent resistor. To avoid distracting algebra, we'll assume each resistor is $10\ \Omega$. In step 1, we reduce the two sets of parallel resistors circled by the blue dashed loop. The upper set has three resistors in parallel and will be reduced to a single equivalent resistor R_{P1} . The lower set has two resistors in parallel and will be reduced to a single equivalent resistor R_{P2} . Using the equation for the equivalent resistance of resistors in parallel, we obtain

$$R_{P1} = \frac{1}{1/R_2 + 1/R_3 + 1/R_4} = \frac{1}{1/10\ \Omega + 1/10\ \Omega + 1/10\ \Omega} = \frac{10}{3}\ \Omega$$

$$R_{P2} = \frac{1}{1/R_5 + 1/R_6} = \frac{1}{1/10\ \Omega + 1/10\ \Omega} = 5\ \Omega.$$

19.34

These two equivalent resistances are encircled by the red dashed loop following step 1. They are in series, so we can use the

equation for the equivalent resistance of resistors in series to reduce them to a single equivalent resistance R_{S1} . This is done in step 2, with the result being

$$R_{S1} = R_{P1} + R_{P2} = \frac{10}{3} \Omega + 5 \Omega = \frac{25}{3} \Omega. \quad 19.35$$

The equivalent resistor R_{S1} appears in the green dashed loop following step 2. This resistor is in parallel with resistor R_7 , so the pair can be replaced by the equivalent resistor R_{P3} , which is given by

$$R_{P3} = \frac{1}{1/R_{S1} + 1/R_7} = \frac{1}{3/25 \Omega + 1/10 \Omega} = \frac{50}{11} \Omega. \quad 19.36$$

This is done in step 3. The resistor R_{P3} is in series with the resistor R_1 , as shown in the purple dashed loop following step 3. These two resistors are combined in the final step to form the final equivalent resistor R_{equiv} , which is

$$R_{\text{equiv}} = R_1 + R_{P3} = 10 \Omega + \frac{50}{11} \Omega = \frac{160}{11} \Omega. \quad 19.37$$

Thus, the entire combination of seven resistors may be replaced by a single resistor with a resistance of about 14.5Ω .

That was a lot of work, and you might be asking why we do it. It's important for us to know the equivalent resistance of the entire circuit so that we can calculate the current flowing through the circuit. Ohm's law tells us that the current flowing through a circuit depends on the resistance of the circuit and the voltage across the circuit. But to know the current, we must first know the equivalent resistance.

Here is a general approach to find the equivalent resistor for any arbitrary combination of resistors:

1. Identify a group of resistors that are only in parallel or only in series.
2. For resistors in series, use the equation for the equivalent resistance of resistors in series to reduce them to a single equivalent resistance. For resistors in parallel, use the equation for the equivalent resistance of resistors in parallel to reduce them to a single equivalent resistance.
3. Draw a new circuit diagram with the resistors from step 1 replaced by their equivalent resistor.
4. If more than one resistor remains in the circuit, return to step 1 and repeat. Otherwise, you are finished.



FUN IN PHYSICS

Robot

Robots have captured our collective imagination for over a century. Now, this dream of creating clever machines to do our dirty work, or sometimes just to keep us company, is becoming a reality. *Robotics* has become a huge field of research and development, with some technology already being commercialized. Think of the small autonomous vacuum cleaners, for example.

[Figure 19.18](#) shows just a few of the multitude of different forms robots can take. The most advanced humanoid robots can walk, pour drinks, even dance (albeit not very gracefully). Other robots are bio-inspired, such as the *dogbot* shown in the middle photograph of [Figure 19.18](#). This robot can carry hundreds of pounds of load over rough terrain. The photograph on the right in [Figure 19.18](#) shows the inner workings of an *M-block*, developed by the Massachusetts Institute of Technology. These simple-looking blocks contain inertial wheels and electromagnets that allow them to spin and flip into the air and snap together in a variety of shapes. By communicating wirelessly between themselves, they self-assemble into a variety of shapes, such as desks, chairs, and someday maybe even buildings.

All robots involve an immense amount of physics and engineering. The simple act of pouring a drink has only recently been mastered by robots, after over 30 years of research and development! The balance and timing that we humans take for granted is in fact a very tricky act to follow, requiring excellent balance, dexterity, and feedback. To master this requires sensors to detect balance, computing power to analyze the data and communicate the appropriate compensating actions, and joints and actuators to implement the required actions.

In addition to sensing gravity or acceleration, robots can contain multiple different sensors to detect light, sound, temperature, smell, taste, etc. These devices are all based on the physical principles that you are studying in this text. For example, the optics used for robotic vision are similar to those used in your digital cameras: pixelated semiconducting detectors in which light is

converted into electrical signals. To detect temperature, simple thermistors may be used, which are resistors whose resistance changes depending on temperature.

Building a robot today is much less arduous than it was a few years ago. Numerous companies now offer kits for building robots. These range in complexity something suitable for elementary school children to something that would challenge the best professional engineers. If interested, you may find these easily on the Internet and start making your own robot today.



Figure 19.18 Robots come in many shapes and sizes, from the classic *humanoid* type to *dogbots* to small cubes that self-assemble to perform a variety of tasks.



WATCH PHYSICS

Resistors in Parallel

This video shows a lecturer discussing a simple circuit with a battery and a pair of resistors in parallel. He emphasizes that electrons flow in the direction opposite to that of the positive current and also makes use of the fact that the voltage is the same at all points on an ideal wire. The derivation is quite similar to what is done in this text, but the lecturer goes through it well, explaining each step.

[Click to view content \(https://www.openstax.org/l/28resistors\)](https://www.openstax.org/l/28resistors)

GRASP CHECK

True or false—In a circuit diagram, we can assume that the voltage is the same at every point in a given wire.

- false
- true



WATCH PHYSICS

Resistors in Series and in Parallel

This video shows how to calculate the equivalent resistance of a circuit containing resistors in parallel and in series. The lecturer uses the same approach as outlined above for finding the equivalent resistance.

[Click to view content \(https://www.openstax.org/l/28resistorssp\)](https://www.openstax.org/l/28resistorssp)

GRASP CHECK

Imagine connected N identical resistors in parallel. Each resistor has a resistance of R . What is the equivalent resistance for this group of parallel resistors?

- The equivalent resistance is $(R)^N$.

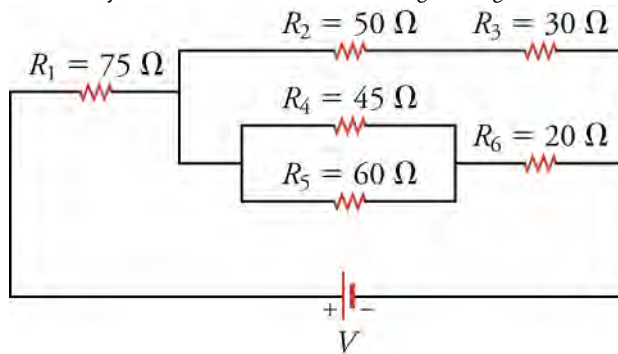
- b. The equivalent resistance is NR .
- c. The equivalent resistance is $\frac{R}{N}$.
- d. The equivalent resistance is $\frac{N}{R}$.



WORKED EXAMPLE

Find the Current through a Complex Resistor Circuit

The battery in the circuit below has a voltage rating of 10 V. What current flows through the circuit and in what direction?



STRATEGY

Apply the strategy for finding equivalent resistance to replace all the resistors with a single equivalent resistance, then use Ohm's law to find the current through the equivalent resistor.

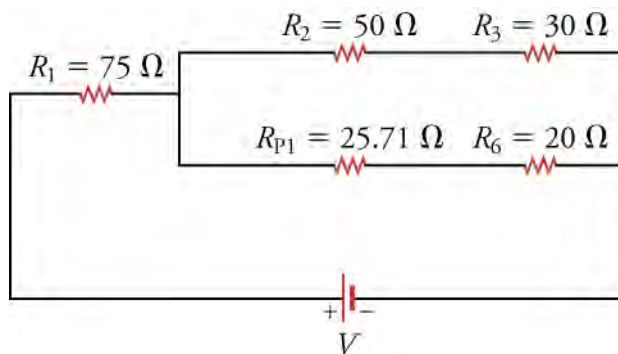
Solution

The resistor combination R_4 and R_5 can be reduced to an equivalent resistance of

$$R_{P1} = \frac{1}{1/R_4 + 1/R_5} = \frac{1}{1/45 \, \Omega + 1/60 \, \Omega} = 25.71 \, \Omega.$$

19.38

Replacing R_4 and R_5 with this equivalent resistance gives the circuit below.

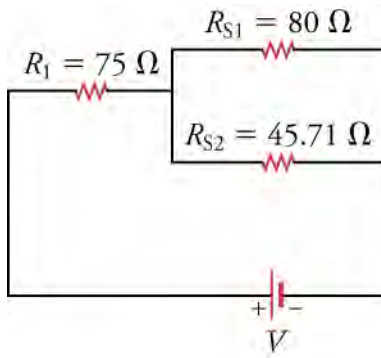


We now replace the two upper resistors R_2 and R_3 by the equivalent resistor R_{S1} and the two lower resistors R_{P1} and R_6 by their equivalent resistor R_{S2} . These resistors are in series, so we add them together to find the equivalent resistance.

$$\begin{aligned} R_{S1} &= R_2 + R_3 = 50 \, \Omega + 30 \, \Omega = 80 \, \Omega \\ R_{S2} &= R_{P1} + R_6 = 25.71 \, \Omega + 20 \, \Omega = 45.71 \, \Omega \end{aligned}$$

19.39

Replacing the relevant resistors with their equivalent resistor gives the circuit below.

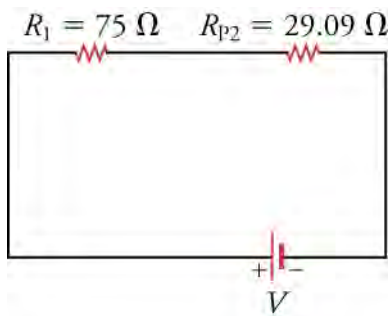


Now replace the two resistors R_{S1} and R_{S2} , which are in parallel, with their equivalent resistor R_{P2} . The resistance of R_{P2} is

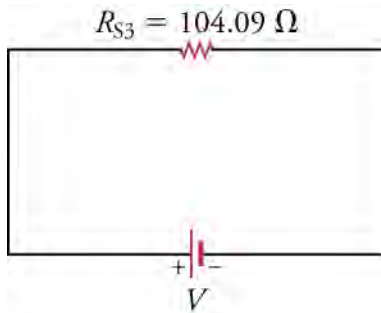
$$R_{P2} = \frac{1}{1/R_{S1} + 1/R_{S2}} = \frac{1}{1/80 \, \Omega + 1/45.71 \, \Omega} = 29.09 \, \Omega.$$

19.40

Updating the circuit diagram by replacing R_{S1} and R_{S2} with this equivalent resistance gives the circuit below.



Finally, we combine resistors R_1 and R_{P2} , which are in series. The equivalent resistance is $R_{S3} = R_1 + R_{P2} = 75 \, \Omega + 29.09 \, \Omega = 104.09 \, \Omega$. The final circuit is shown below.



We now use Ohm's law to find the current through the circuit.

$$V = IR_{S3}$$

$$I = \frac{V}{R_{S3}} = \frac{10 \, \text{V}}{104.09 \, \Omega} = 0.096 \, \text{A}$$

19.41

The current goes from the positive terminal of the battery to the negative terminal of the battery, so it flows clockwise in this circuit.

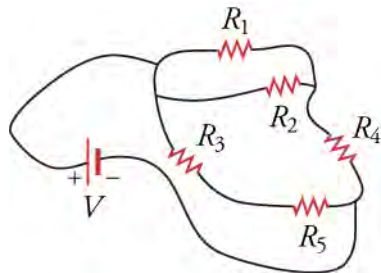
Discussion

This calculation may seem rather long, but with a little practice, you can combine some steps. Note also that extra significant digits were carried through the calculation. Only at the end was the final result rounded to two significant digits.

WORKED EXAMPLE

Strange-Looking Circuit Diagrams

Occasionally, you may encounter circuit diagrams that are not drawn very neatly, such as the diagram shown below. This circuit diagram looks more like how a real circuit might appear on the lab bench. What is the equivalent resistance for the resistors in this diagram, assuming each resistor is $10\ \Omega$ and the voltage rating of the battery is 12 V .

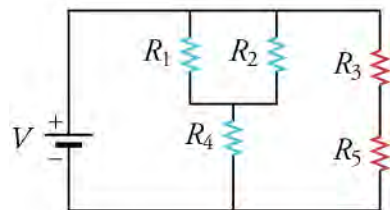
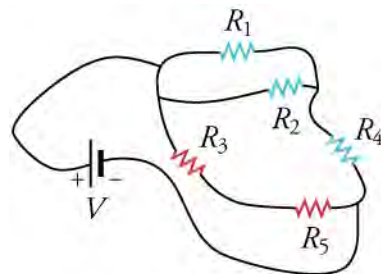


STRATEGY

Let's redraw this circuit diagram to make it clearer. Then we'll apply the strategy outlined above to calculate the equivalent resistance.

Solution

To redraw the diagram, consider the figure below. In the upper circuit, the blue resistors constitute a path from the positive terminal of the battery to the negative terminal. In parallel with this circuit are the red resistors, which constitute another path from the positive to negative terminal of the battery. The blue and red paths are shown more cleanly drawn in the lower circuit diagram. Note that, in both the upper and lower circuit diagrams, the blue and red paths connect the positive terminal of the battery to the negative terminal of the battery.



Now it is easier to see that R_1 and R_2 are in parallel, and the parallel combination is in series with R_4 . This combination in turn is in parallel with the series combination of R_3 and R_5 . First, we calculate the blue branch, which contains R_1 , R_2 , and R_4 . The equivalent resistance is

$$R_{\text{blue}} = \frac{1}{1/R_1 + 1/R_2} + R_4 = \frac{1}{1/10\Omega + 1/10\Omega} + 10\ \Omega = 15\ \Omega.$$

19.42

where we show the contribution from the parallel combination of resistors and from the series combination of resistors. We now calculate the equivalent resistance of the red branch, which is

$$R_{\text{red}} = R_3 + R_5 = 10\ \Omega + 10\ \Omega = 20\ \Omega.$$

19.43

Inserting these equivalent resistors into the circuit gives the circuit below.

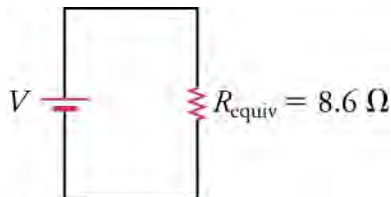


These two resistors are in parallel, so they can be replaced by a single equivalent resistor with a resistance of

$$R_{\text{equiv}} = \frac{1}{1/R_{\text{blue}} + 1/R_{\text{red}}} = \frac{1}{1/15\ \Omega + 1/20\ \Omega} = 8.6\ \Omega.$$

19.44

The final equivalent circuit is shown below.



Discussion

Finding the equivalent resistance was easier with a clear circuit diagram. This is why we try to make clear circuit diagrams, where the resistors in parallel are lined up parallel to each other and at the same horizontal position on the diagram.

We can now use Ohm's law to find the current going through each branch to this circuit. Consider the circuit diagram with R_{blue} and R_{red} . The voltage across each of these branches is 12 V (i.e., the voltage rating of the battery). The current in the blue branch is

$$I_{\text{blue}} = \frac{V}{R_{\text{blue}}} = \frac{12\ \text{V}}{15\ \Omega} = 0.80\ \text{A}.$$

19.45

The current across the red branch is

$$I_{\text{red}} = \frac{V}{R_{\text{red}}} = \frac{12\ \text{V}}{20\ \Omega} = 0.60\ \text{A}.$$

19.46

The current going through the battery must be the sum of these two currents (can you see why?), or 1.4 A.

Practice Problems

12. What is the formula for the equivalent resistance of two parallel resistors with resistance R_1 and R_2 ?
 - a. Equivalent resistance of two parallel resistors $R_{\text{eqv}} = R_1 + R_2$
 - b. Equivalent resistance of two parallel resistors $R_{\text{eqv}} = R_1 \times R_2$
 - c. Equivalent resistance of two parallel resistors $R_{\text{eqv}} = R_1 - R_2$
 - d. Equivalent resistance of two parallel resistors $R_{\text{eqv}} = \frac{1}{1/R_1 + 1/R_2}$

13.

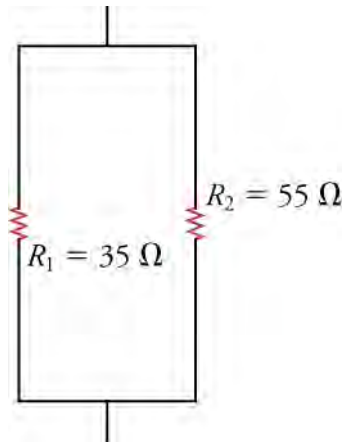


Figure 19.19

What is the equivalent resistance for the two resistors shown below?

- The equivalent resistance is $20\ \Omega$
- The equivalent resistance is $21\ \Omega$
- The equivalent resistance is $90\ \Omega$
- The equivalent resistance is $1,925\ \Omega$

Check Your Understanding

- The voltage drop across parallel resistors is _____.
 - the same for all resistors
 - greater for the larger resistors
 - less for the larger resistors
 - greater for the smaller resistors
- Consider a circuit of parallel resistors. The smallest resistor is $25\ \Omega$. What is the upper limit of the equivalent resistance?
 - The upper limit of the equivalent resistance is $2.5\ \Omega$.
 - The upper limit of the equivalent resistance is $25\ \Omega$.
 - The upper limit of the equivalent resistance is $100\ \Omega$.
 - There is no upper limit.

19.4 Electric Power

Section Learning Objectives

By the end of this section, you will be able to do the following:

- Define electric power and describe the electric power equation
- Calculate electric power in circuits of resistors in series, parallel, and complex arrangements

Section Key Terms

electric power

Power is associated by many people with electricity. Every day, we use electric power to run our modern appliances. Electric power transmission lines are visible examples of electricity providing power. We also use electric power to start our cars, to run our computers, or to light our homes. Power is the rate at which energy of any type is transferred; **electric power** is the rate at which electric energy is transferred in a circuit. In this section, we'll learn not only what this means, but also what factors determine electric power.

To get started, let's think of light bulbs, which are often characterized in terms of their power ratings in watts. Let us compare a 25-W bulb with a 60-W bulb (see [Figure 19.20](#)). Although both operate at the same voltage, the 60-W bulb emits more light intensity than the 25-W bulb. This tells us that something other than voltage determines the power output of an electric circuit.

Incandescent light bulbs, such as the two shown in [Figure 19.20](#), are essentially resistors that heat up when current flows through them and they get so hot that they emit visible and invisible light. Thus the two light bulbs in the photo can be considered as two different resistors. In a simple circuit such as a light bulb with a voltage applied to it, the resistance determines the current by Ohm's law, so we can see that current as well as voltage must determine the power.

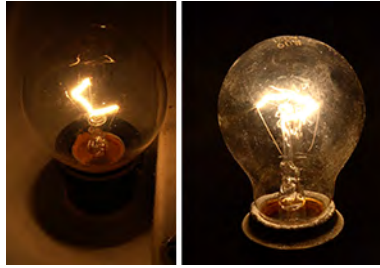


Figure 19.20 On the left is a 25-W light bulb, and on the right is a 60-W light bulb. Why are their power outputs different despite their operating on the same voltage?

The formula for power may be found by dimensional analysis. Consider the units of power. In the SI system, power is given in watts (W), which is energy per unit time, or J/s

$$W = \frac{J}{s}. \quad 19.47$$

Recall now that a voltage is the potential energy per unit charge, which means that voltage has units of J/C

$$V = \frac{J}{C}. \quad 19.48$$

We can rewrite this equation as $J = V \times C$ and substitute this into the equation for watts to get

$$W = \frac{J}{s} = \frac{V \times C}{s} = V \times \frac{C}{s}.$$

But a Coulomb per second (C/s) is an electric current, which we can see from the definition of electric current, $I = \frac{\Delta Q}{\Delta t}$, where ΔQ is the charge in coulombs and Δt is time in seconds. Thus, equation above tells us that electric power is voltage times current, or

$$P = IV.$$

This equation gives the electric power consumed by a circuit with a voltage drop of V and a current of I .

For example, consider the circuit in [Figure 19.21](#). From Ohm's law, the current running through the circuit is

$$I = \frac{V}{R} = \frac{12 \text{ V}}{100 \Omega} = 0.12 \text{ A}. \quad 19.49$$

Thus, the power consumed by the circuit is

$$P = VI = (12 \text{ V})(0.12 \text{ A}) = 1.4 \text{ W}. \quad 19.50$$

Where does this power go? In this circuit, the power goes primarily into heating the resistor in this circuit.

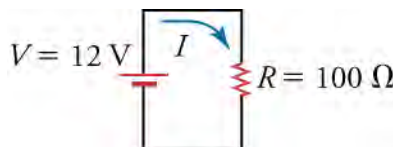


Figure 19.21 A simple circuit that consumes electric power.

In calculating the power in the circuit of [Figure 19.21](#), we used the resistance and Ohm's law to find the current. Ohm's law gives the current: $I = V/R$, which we can insert into the equation for electric power to obtain

$$P = IV = \left(\frac{V}{R} \right) V = \frac{V^2}{R}.$$

This gives the power in terms of only the voltage and the resistance.

We can also use Ohm's law to eliminate the voltage in the equation for electric power and obtain an expression for power in terms of just the current and the resistance. If we write Ohm's law as $V = IR$ and use this to eliminate V in the equation $P = IV$, we obtain

$$P = IV = I(IR) = I^2R.$$

This gives the power in terms of only the current and the resistance.

Thus, by combining Ohm's law with the equation $P = IV$ for electric power, we obtain two more expressions for power: one in terms of voltage and resistance and one in terms of current and resistance. Note that only resistance (not capacitance or anything else), current, and voltage enter into the expressions for electric power. This means that the physical characteristic of a circuit that determines how much power it dissipates is its resistance. Any capacitors in the circuit do not dissipate electric power—on the contrary, capacitors either store electric energy or release electric energy back to the circuit.

To clarify how voltage, resistance, current, and power are all related, consider [Figure 19.22](#), which shows the *formula wheel*. The quantities in the center quarter circle are equal to the quantities in the corresponding outer quarter circle. For example, to express a potential V in terms of power and current, we see from the formula wheel that $V = P/I$.

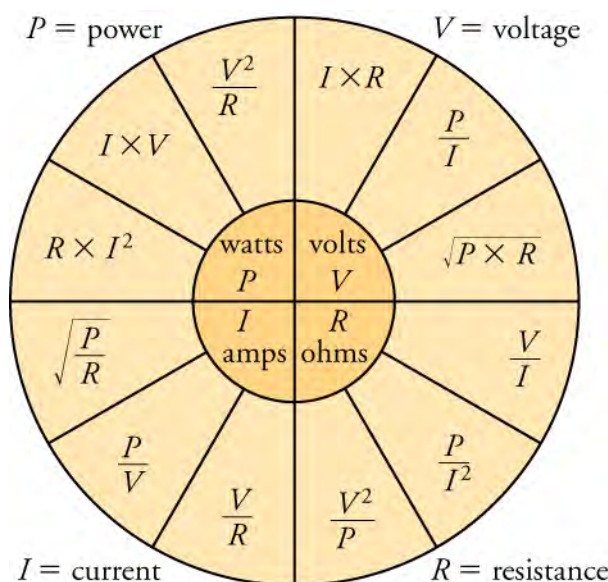


Figure 19.22 The formula wheel shows how volts, resistance, current, and power are related. The quantities in the inner quarter circles equal the quantities in the corresponding outer quarter circles.



WORKED EXAMPLE

Find the Resistance of a Lightbulb

A typical older incandescent lightbulb was 60 W. Assuming that 120 V is applied across the lightbulb, what is the current through the lightbulb?

STRATEGY

We are given the voltage and the power output of a simple circuit containing a lightbulb, so we can use the equation $P = IV$ to find the current I that flows through the lightbulb.

Solution

Solving $P = IV$ for the current and inserting the given values for voltage and power gives

$$P = IV$$

$$I = \frac{P}{V} = \frac{60 \text{ W}}{120 \text{ V}} = 0.50 \text{ A.}$$

19.51

Thus, a half ampere flows through the lightbulb when 120 V is applied across it.

Discussion

This is a significant current. Recall that household power is AC and not DC, so the 120 V supplied by household sockets is an alternating power, not a constant power. The 120 V is actually the time-averaged power provided by such sockets. Thus, the average current going through the light bulb over a period of time longer than a few seconds is 0.50 A.

**WORKED EXAMPLE****Boot Warmers**

To warm your boots on cold days, you decide to sew a circuit with some resistors into the insole of your boots. You want 10 W of heat output from the resistors in each insole, and you want to run them from two 9-V batteries (connected in series). What total resistance should you put in each insole?

STRATEGY

We know the desired power and the voltage (18 V, because we have two 9-V batteries connected in series), so we can use the equation $P = V^2/R$ to find the requisite resistance.

Solution

Solving $P = V^2/R$ for the resistance and inserting the given voltage and power, we obtain

$$P = \frac{V^2}{R}$$

$$R = \frac{V^2}{P} = \frac{(18 \text{ V})^2}{10 \text{ W}} = 32 \, \Omega.$$

19.52

Thus, the total resistance in each insole should be $32 \, \Omega$.

Discussion

Let's see how much current would run through this circuit. We have 18 V applied across a resistance of $32 \, \Omega$, so Ohm's law gives

$$I = \frac{V}{R} = \frac{18 \text{ V}}{32 \, \Omega} = 0.56 \text{ A}.$$

19.53

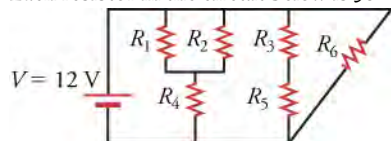
All batteries have labels that say how much charge they can deliver (in terms of a current multiplied by a time). A typical 9-V alkaline battery can deliver a charge of $565 \text{ mA} \cdot \text{h}$ (so two 9 V batteries deliver $1,130 \text{ mA} \cdot \text{h}$), so this heating system would function for a time of

$$t = \frac{1130 \times 10^{-3} \text{ A} \cdot \text{h}}{0.56 \text{ A}} = 2.0 \text{ h}.$$

19.54

**WORKED EXAMPLE****Power through a Branch of a Circuit**

Each resistor in the circuit below is $30 \, \Omega$. What power is dissipated by the middle branch of the circuit?

**STRATEGY**

The middle branch of the circuit contains resistors R_2 and R_4 in parallel. The voltage across this branch is 12 V. We will first find the equivalent resistance in this branch, and then use $P = V^2/R$ to find the power dissipated in the branch.

Solution

The equivalent resistance is $R_{\text{middle}} = R_2 + R_4 = 30 \, \Omega + 30 \, \Omega = 60 \, \Omega$. The power dissipated by the middle branch of the circuit is

$$P_{\text{middle}} = \frac{V^2}{R_{\text{middle}}} = \frac{(12 \text{ V})^2}{60 \, \Omega} = 2.4 \text{ W}.$$

19.55

Discussion

Let's see if energy is conserved in this circuit by comparing the power dissipated in the circuit to the power supplied by the battery. First, the equivalent resistance of the left branch is

$$R_{\text{left}} = \frac{1}{1/R_1 + 1/R_2} + R_4 = \frac{1}{1/30 \, \Omega + 1/30 \, \Omega} + 30 \, \Omega = 45 \, \Omega.$$

19.56

The power through the left branch is

$$P_{\text{left}} = \frac{V^2}{R_{\text{left}}} = \frac{(12 \text{ V})^2}{45 \, \Omega} = 3.2 \text{ W}.$$

19.57

The right branch contains only R_6 , so the equivalent resistance is $R_{\text{right}} = R_6 = 30 \, \Omega$. The power through the right branch is

$$P_{\text{right}} = \frac{V^2}{R_{\text{right}}} = \frac{(12 \text{ V})^2}{30 \, \Omega} = 4.8 \text{ W}.$$

19.58

The total power dissipated by the circuit is the sum of the powers dissipated in each branch.

$$P = P_{\text{left}} + P_{\text{middle}} + P_{\text{right}} = 2.4 \text{ W} + 3.2 \text{ W} + 4.8 \text{ W} = 10.4 \text{ W}$$

19.59

The power provided by the battery is

$$P = IV.$$

19.60

where I is the total current flowing through the battery. We must therefore add up the currents going through each branch to obtain I . The branches contribute currents of

$$\begin{aligned} I_{\text{left}} &= \frac{V}{R_{\text{left}}} = \frac{12 \text{ V}}{45 \, \Omega} = 0.2667 \text{ A} \\ I_{\text{middle}} &= \frac{V}{R_{\text{middle}}} = \frac{12 \text{ V}}{60 \, \Omega} = 0.20 \text{ A} \\ I_{\text{right}} &= \frac{V}{R_{\text{right}}} = \frac{12 \text{ V}}{30 \, \Omega} = 0.40 \text{ A}. \end{aligned}$$

19.61

The total current is

$$I = I_{\text{left}} + I_{\text{middle}} + I_{\text{right}} = 0.2667 \text{ A} + 0.20 \text{ A} + 0.40 \text{ A} = 0.87 \text{ A}.$$

19.62

and the power provided by the battery is

$$P = IV = (0.87 \text{ A})(12 \text{ V}) = 10.4 \text{ W}.$$

19.63

This is the same power as is dissipated in the resistors of the circuit, which shows that energy is conserved in this circuit.

Practice Problems

16. What is the formula for the power dissipated in a resistor?
 - a. The formula for the power dissipated in a resistor is $P = \frac{I}{V}$.
 - b. The formula for the power dissipated in a resistor is $P = \frac{V}{I}$.
 - c. The formula for the power dissipated in a resistor is $P = IV$.
 - d. The formula for the power dissipated in a resistor is $P = I^2 V$.
17. What is the formula for power dissipated by a resistor given its resistance and the voltage across it?
 - a. The formula for the power dissipated in a resistor is $P = \frac{R}{V^2}$.
 - b. The formula for the power dissipated in a resistor is $P = V^2 R$.
 - c. The formula for the power dissipated in a resistor is $P = \frac{V^2}{R}$.
 - d. The formula for the power dissipated in a resistor is $P = I^2 R$.

Check your Understanding

18. Which circuit elements dissipate power?
 - a. capacitors
 - b. inductors
 - c. ideal switches
 - d. resistors
19. Explain in words the equation for power dissipated by a given resistance.
 - a. Electric power is proportional to current through the resistor multiplied by the square of the voltage across the resistor.
 - b. Electric power is proportional to square of current through the resistor multiplied by the voltage across the resistor.
 - c. Electric power is proportional to current through the resistor divided by the voltage across the resistor.
 - d. Electric power is proportional to current through the resistor multiplied by the voltage across the resistor.

KEY TERMS

alternating current electric current whose direction alternates back and forth at regular intervals

ampere unit for electric current; one ampere is one coulomb per second ($1 \text{ A} = 1 \text{ C/s}$)

circuit diagram schematic drawing of an electrical circuit including all circuit elements, such as resistors, capacitors, batteries, and so on

conventional current flows in the direction that a positive charge would flow if it could move

direct current electric current that flows in a single direction

electric circuit physical network of paths through which electric current can flow

electric current electric charge that is moving

electric power rate at which electric energy is transferred in a circuit

equivalent resistor resistance of a single resistor that is the

same as the combined resistance of a group of resistors

in parallel when a group of resistors are connected side by side, with the top ends of the resistors connected together by a wire and the bottom ends connected together by a different wire

in series when elements in a circuit are connected one after the other in the same branch of the circuit

nonohmic material that does not follow Ohm's law

Ohm's law electric current is proportional to the voltage applied across a circuit or other path

ohmic material that obeys Ohm's law

resistance how much a circuit element opposes the passage of electric current; it appears as the constant of proportionality in Ohm's law

resistor circuit element that provides a known resistance

steady state when the characteristics of a system do not change over time

SECTION SUMMARY

19.1 Ohm's law

- Direct current is constant over time; alternating current alternates smoothly back and forth over time.
- Electrical resistance causes materials to extract work from the current that flows through them.
- In ohmic materials, voltage drop along a path is proportional to the current that runs through the path.

19.2 Series Circuits

- Circuit diagrams are schematic representations of electric circuits.
- Resistors in series are resistors that are connected head to tail.
- The same current runs through all resistors in series; however, the voltage drop across each resistor can be different.
- The voltage is the same at every point in a given wire.

19.3 Parallel Circuits

- The equivalent resistance of a group of N identical resistors R connected in parallel is R/N .
- Connecting resistors in parallel provides more paths for the current to go through, so the equivalent resistance is always less than the smallest resistance of the parallel resistors.
- The same voltage drop occurs across all resistors in parallel; however, the current through each resistor can differ.

19.4 Electric Power

- Electric power is dissipated in the resistances of a circuit. Capacitors do not dissipate electric power.
- Electric power is proportional to the voltage and the current in a circuit.
- Ohm's law provides two extra expressions for electric power: one that does not involve current and one that does not involve voltage.

KEY EQUATIONS

19.1 Ohm's law

electric current I is the charge ΔQ that passes a plane per unit time Δt

$$I = \frac{\Delta Q}{\Delta t}$$

an ampere is the coulombs per unit time that pass a plane

$$1 \text{ A} = 1 \text{ C/s}$$

Ohm's law: the current I is proportional to the voltage V , with the resistance R being the constant of proportionality

$$V = IR$$

19.2 Series Circuits

the equivalent
resistance of N
resistors connected
in series

$$R_{\text{equiv}} = R_1 + R_2 + \cdots + R_N$$

19.3 Parallel Circuits

the equivalent
resistance of N resistors
connected in parallel

$$R_{\text{equiv}} = \frac{1}{1/R_1 + 1/R_2 + \cdots + 1/R_N}$$

19.4 Electric Power

for a given current I flowing through a
potential difference V , the electric power
dissipated

$$P = IV$$

for a given current I flowing through a
resistance R , the electric power dissipated

$$P = I^2 R$$

for a given voltage difference V across a
resistor R , the electric power dissipated

$$P = \frac{V^2}{R}$$

CHAPTER REVIEW

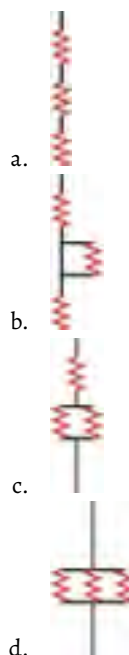
Concept Items

19.1 Ohm's law

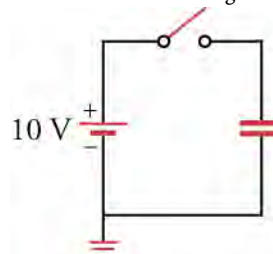
- You connect a resistor across a battery. In which direction do the electrons flow?
 - The electrons flow from the negative terminal of the battery to the positive terminal of the battery.
 - The electrons flow from the positive terminal of the battery to the negative terminal of the battery.
- How does current depend on resistance in Ohm's law?
 - Current is directly proportional to the resistance.
 - Current is inversely proportional to the resistance.
 - Current is proportional to the square of the resistance.
 - Current is inversely proportional to the square of the resistance.
- In the context of electricity, what is resistance?
 - Resistance is the property of materials to resist the passage of voltage.
 - Resistance is the property of materials to resist the passage of electric current.
 - Resistance is the property of materials to increase the passage of voltage.
 - Resistance is the property of materials to increase the passage of electric current.
- What is the mathematical formula for Ohm's law?
 - $V = I^2 R$
 - $V = \frac{R}{I}$
 - $V = \frac{I}{R}$
 - $V = IR$

19.2 Series Circuits

- In which circuit are all the resistors connected in series?



- What is the voltage and current through the capacitor in the circuit below a long time after the switch is closed?



- 0 V, 0 A
- 0 V, 10 A
- 10 V, 0 A
- 10 V, 10 A

19.3 Parallel Circuits

7. If you remove resistance from a circuit, does the total resistance of the circuit always decrease? Explain.
 - a. No, because for parallel combination of resistors, the resistance through the remaining circuit increases.
 - b. Yes, because for parallel combination of resistors, the resistance through the remaining circuit increases.
8. Explain why the equivalent resistance of a parallel combination of resistors is always less than the smallest of the parallel resistors.
 - a. Adding resistors in parallel gives the current a shorter path through which it can flow hence decreases the overall resistance.
 - b. Adding resistors in parallel gives the current another path through which it can flow hence decreases the overall resistance.
 - c. Adding resistors in parallel reduce the number of paths through which the current can flow hence

decreases the overall resistance.

- d. Adding resistors in parallel gives the current longer path through which it can flow hence decreases the overall resistance.

19.4 Electric Power

9. To draw the most power from a battery, should you connect a small or a large resistance across its terminals? Explain.
 - a. Small resistance, because smaller resistance will lead to the largest power
 - b. Large resistance, because smaller resistance will lead to the largest power
10. If you double the current through a resistor, by what factor does the power dissipated by the resistor change?
 - a. Power increases by a factor of two.
 - b. Power increases by a factor of four.
 - c. Power increases by a factor of eight.
 - d. Power increases by a factor of 16.

Critical Thinking Items

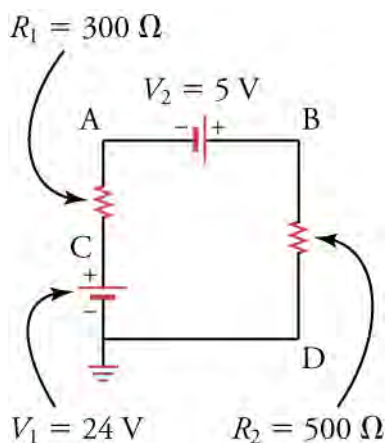
19.1 Ohm's law

11. An accelerator accelerates He nuclei (charge = $2e$) to a speed of $v = 2 \times 10^6$ m/s. What is the current if the linear density of He nuclei is $\lambda = 108$ m $^{-1}$?
 - a. $I = 9.6 \times 10^{-5}$ A
 - b. $I = 3.2 \times 10^{-5}$ A
 - c. $I = 12.8 \times 10^{-5}$ A
 - d. $I = 6.4 \times 10^{-5}$ A
12. How can you verify whether a certain material is ohmic?
 - a. Make a resistor from this material and measure the current going through this resistor for several different voltages. If the current is proportional to the voltage, then the material is ohmic.
 - b. Make a resistor from this material and measure the current going through this resistor for several different voltages. If the current is inversely proportional to the voltage, then the material is ohmic.
 - c. Make a resistor from this material and measure the current going through this resistor for several different voltages. If the current is proportional to the square of the voltage, then the material is ohmic.
 - d. Make a resistor from this material and measure the current going through this resistor for several different voltages. If the current is inversely proportional to the square of the voltage, then the

material is ohmic.

19.2 Series Circuits

13. Given three batteries (5V, 9V, 12V) and five resistors (10, 20, 30, 40, 50 Ω) to choose from, what can you choose to form a circuit diagram with a current of 0.175A? You do not need to use all of the components.
 - a. Batteries (5V, 9V) and resistors (30 Ω , 50 Ω) connected in series
 - b. Batteries (5V, 12V) and resistors (10 Ω , 20 Ω , 40 Ω , and 50 Ω) connected in series.
 - c. Batteries (5V, 9V, and 12V) and resistors (10 Ω , 20 Ω , and 30 Ω) connected in series.
14. What is the maximum resistance possible given a resistor of 100 and a resistor of 40 Ω ?
 - a. 100 Ω
 - b. 140 Ω
 - c. 180 Ω
 - d. 240 Ω
15. Rank the points A, B, C, and D in the circuit diagram from lowest voltage to highest voltage.



- A, B, C, D
- B, C, A, D
- C, B, A, D
- D, A, B, C

19.3 Parallel Circuits

- Can all resistor combinations be reduced to series and parallel combinations?
 - No, all practical resistor circuits cannot be reduced to series and parallel combinations.
 - Yes, all practical resistor circuits can be reduced to series and parallel combinations.
- What is the equivalent resistance of the circuit shown below?

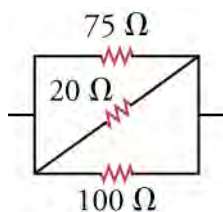


Figure 19.23

Problems

19.1 Ohm's law

- What voltage is needed to make 6 C of charge traverse a 100-Ω resistor in 1 min?
 - The required voltage is 1×10^{-3} V.
 - The required voltage is 10 V.
 - The required voltage is 1,000 V.
 - The required voltage is 10,000 V.
- Resistors typically obey Ohm's law at low currents, but show deviations at higher currents because of heating. Suppose you were to conduct an experiment measuring the voltage, V , across a resistor as a function of current, I , including currents whose deviations from Ohm's law start to become apparent. For a data plot of V versus I ,

- The equivalent resistance of the circuit 14 Ω.
- The equivalent resistance of the circuit 16.7 Ω.
- The equivalent resistance of the circuit 140 Ω.
- The equivalent resistance of the circuit 195 Ω.

19.4 Electric Power

- Two lamps have different resistances. (a) If the lamps are connected in parallel, which one is brighter, the lamp with greater resistance or the lamp with less resistance? (b) If the lamps are connected in series, which one is brighter? Note that the brighter lamp dissipates more power.
 - (a) lamp with greater resistance; (b) lamp with less resistance
 - (a) lamp with greater resistance; (b) lamp with greater resistance
 - (a) lamp with less resistance; (b) lamp with less resistance
 - (a) lamp with less resistance; (b) lamp with greater resistance
- To measure the power consumed by your laptop computer, you place an ammeter (a device that measures electric current) in series with its DC power supply. When the screen is off, the computer draws 0.40 A of current. When the screen is on at full brightness, it draws 0.90 A of current. Knowing the DC power supply delivers 16 V, how much power is used by the screen?
 - The power used by the screen is -8.0 W.
 - The power used by the screen is 0.3 W.
 - The power used by the screen is 3.2 W.
 - The power used by the screen is 8.0 W.

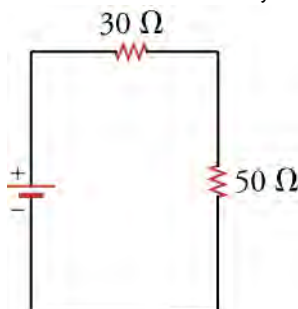
which of the following functions would be best to fit the data? Assume that a , b , and c are nonzero constants adjusted to fit the data.

- $V = aI$
 - $V = aI + b$
 - $V = aI + bI^2$
 - $V = aI + bI^2 + c$
- A battery of unknown voltage V_1 is attached across a resistor R_1 . You add a second battery with $V_2 = 9.0$ V in series with V_1 so that the voltage across R_1 is now $V_1 + V_2$ and measure 0.3 A of current through resistor R_1 . You add a third battery with $V_3 = 9.0$ V in series with the first two batteries so that the voltage across R_1 is $V_1 + V_2 + V_3$ and measure 0.4 A of current through R_1 . What is the resistance of R_1 ?

- a. $23.25\ \Omega$
- b. $21.75\ \Omega$
- c. $31.33\ \Omega$
- d. $13.0\ \Omega$

19.2 Series Circuits

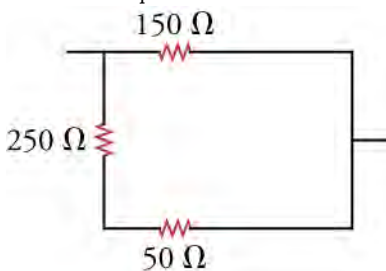
23. What is the voltage drop across two $80\text{-}\Omega$ resistors connected in series with 0.15 A flowing through them?
- a. 12 V
 - b. 24 V
 - c. 36 V
 - d. 48 V
24. In this circuit, the voltage drop across the upper resistor is 4.5 V . What is the battery voltage?



- a. 4.5 V
- b. 7.5 V
- c. 12 V
- d. 18 V

19.3 Parallel Circuits

25. What is the equivalent resistance of this circuit?



Performance Task

19.4 Electric Power

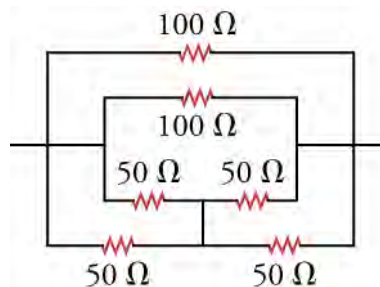
- 29.
1. An incandescent light bulb (i.e., an old-fashioned light bulb with a little wire in it)
 2. A lightbulb socket to hold the light bulb
 3. A variable voltage source
 4. An ammeter

Procedure

- Screw the lightbulb into its socket. Connect the

- a. The equivalent resistance of the circuit is $32.7\ \Omega$.
- b. The equivalent resistance of the circuit is $100\ \Omega$.
- c. The equivalent resistance of the circuit is $327\ \Omega$.
- d. The equivalent resistance of the circuit is $450\ \Omega$.

26. What is the equivalent resistance of the circuit shown below?

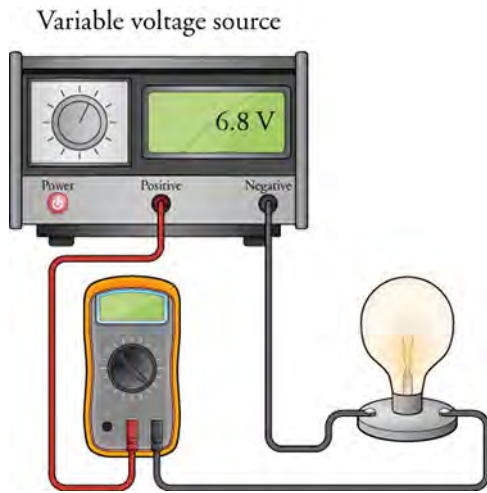


- a. The equivalent resistance is $25\ \Omega$.
- b. The equivalent resistance is $50\ \Omega$.
- c. The equivalent resistance is $75\ \Omega$.
- d. The equivalent resistance is $100\ \Omega$.

19.4 Electric Power

27. When 12 V are applied across a resistor, it dissipates 120 W of power. What is the current through the resistor?
- a. The current is $1,440\text{ A}$.
 - b. The current is 10 A .
 - c. The current is 0.1 A .
 - d. The current is 0.01 A .
28. Warming 1 g of water requires 1 J of energy per $^{\circ}\text{C}$. How long would it take to warm 1 L of water from 20 to $40\text{ }^{\circ}\text{C}$ if you immerse in the water a 1-kW resistor connected across a 9.0-V batteries aligned in series?
- a. 10 min
 - b. 20 min
 - c. 30 min
 - d. 40 min

positive terminal of the voltage source to the input of the ammeter. Connect the output of the ammeter to one connection of the socket. Connect the other connection of the socket to the negative terminal of the voltage source. Ensure that the voltage source is set to supply DC voltage and that the ammeter is set to measure DC amperes. The desired circuit is shown below.



- On a piece of paper, make a two-column table with

10 rows. Label the left column *volts* and the right column *current*. Adjust the voltage source so that it supplies from between 1 and 10 volts DC. For each voltage, write the voltage in the volts column and the corresponding amperage measured by the ammeter in the current column. Make a plot of volts versus current, that is, a plot with volts on the vertical axis and current on the horizontal axis. Use this data and the plot to answer the following questions:

- What is the resistance of the lightbulb?
- What is the range of possible error in your result for the resistance?
- In a single word, how would you describe the curve formed by the data points?

TEST PREP

Multiple Choice

19.1 Ohm's law

- What are the SI units for electric current?
 - C/s
 - e/s
 - e/s
 - C/s²
- What is the SI unit for resistance?
 - C/m
 - C/s
 - Ω
 - Ψ
- The equivalent unit for an ohm is a _____.
 - V/A
 - C/m
 - $\frac{A}{V}$
 - V/s
- You put 9.0 V DC across resistor R_1 and measure the current through it. With the same voltage across resistor R_2 , you measure twice the current. What is the ratio $\frac{R_1}{R_2}$?
 - 1
 - $\frac{1}{2}$
 - 4
 - 2

19.2 Series Circuits

- What does the circuit element shown represent?



- a battery
- a capacitor
- the ground
- a switch

- How many 10- Ω resistors must be connected in series to make an equivalent resistance of 80 Ω ?
 - 80
 - 8
 - 20
 - 40

- Which two circuit elements are represented in the circuit diagram?



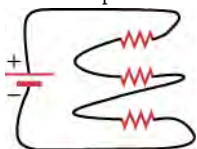
- a battery connected in series with an inductor
 - a capacitor connected in series with a resistor
 - a resistor connected in series with a battery
 - an inductor connected in series with a resistor
- How much current will flow through a 10-V battery with a 100- Ω resistor connected across its terminals?
 - 0.1 A
 - 1.0 A
 - 0
 - 1,000 A

19.3 Parallel Circuits

- A 10- Ω resistor is connected in parallel to another resistor R . The equivalent resistance of the pair is 8 Ω . What is the resistance R ?
 - 10 Ω
 - 20 Ω
 - 30 Ω

d. $40\ \Omega$

39. Are the resistors shown connected in parallel or in series? Explain.



- The resistors are connected in parallel because the same current flows through all three resistors.
- The resistors are connected in parallel because different current flows through all three resistors.
- The resistors are connected in series because the same current flows through all three resistors.
- The resistors are connected in series because different current flows through all three resistors.

19.4 Electric Power

40. Which equation below for electric power is incorrect?
- $P = I^2 R$
 - $P = \frac{V}{R^2}$

Short Answer

19.1 Ohm's law

44. True or false—it is possible to produce nonzero DC current by adding together AC currents.
- false
 - true
45. What type of current is used in cars?
- alternating current
 - indirect current
 - direct current
 - straight current
46. If current were represented by C , voltage by B , and resistance by g , what would the mathematical expression be for Ohm's law?
- $C = Bg$
 - $g = BC$
 - $\frac{B}{C} = \frac{C}{g}$
 - $B = Cg$
47. Give a verbal expression for Ohm's law.
- Ohm's law says that the current through a resistor equals the voltage across the resistor multiplied by the resistance of the resistor.
 - Ohm's law says that the voltage across a resistor equals the current through the resistor multiplied by the resistance of the resistor.
 - Ohm's law says that the resistance of the resistor equals the current through the resistor multiplied

c. $P = IV$

d. $P = \frac{V^2}{R}$

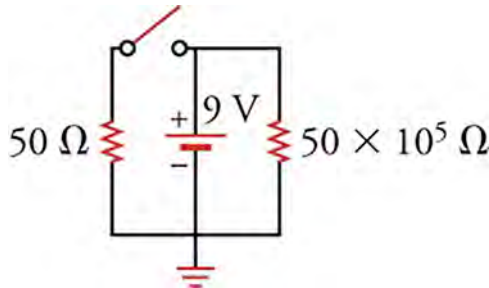
41. What power is dissipated in a circuit through which 0.12 A flows across a potential drop of 3.0 V ?
- 0.36 W
 - 0.011 W
 - Voltage drop across is 5 V .
 - 2.5 W
42. How does a resistor dissipate power?
- A resistor dissipates power in the form of heat.
 - A resistor dissipates power in the form of sound.
 - A resistor dissipates power in the form of light.
 - A resistor dissipates power in the form of charge.
43. What power is dissipated in a circuit through which 0.12 A flows across a potential drop of 3.0 V ?
- 0.36 W
 - 0.011 W
 - 5 V
 - 2.5 W
- by the voltage across a resistor.
- d. Ohm's law says that the voltage across a resistor equals the square of the current through the resistor multiplied by the resistance of the resistor.
48. What is the current through a $100\text{-}\Omega$ resistor with 12 V across it?
- 0
 - 0.12 A
 - 8.33 A
 - $1,200\text{ A}$
49. What resistance is required to produce 0.15 A from a 9.0 V battery?
- 0.017
 - 1
 - 60
 - 120

19.2 Series Circuits

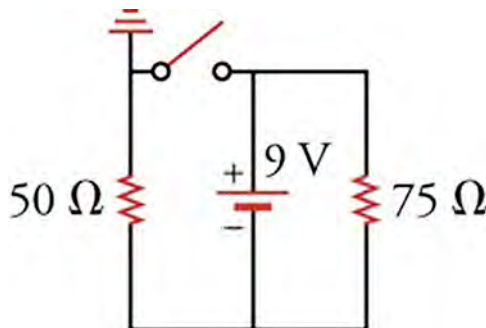
50. Given a circuit with one 9-V battery and with its negative terminal connected to ground. The two paths are connected to ground from the positive terminal: the right path with a $20\text{-}\Omega$ and a $100\text{-}\Omega$ resistor and the left path with a $50\text{-}\Omega$ resistor. How much current will flow in the right branch?
- $\frac{9}{120}$
 - $\frac{9}{100}$

- c. $\frac{9}{50}$
d. $\frac{9}{20}$

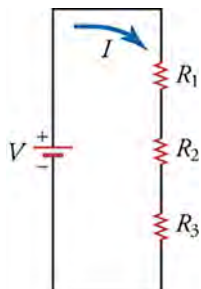
51. Through which branch in the circuit below does the most current flow?



- a. All of the current flows through the left branch due to the open switch.
b. All of the current flows through the right branch due to the open switch in the left branch.
c. All of the current flows through the middle branch due to the open switch in the left branch.
d. There will be no current in any branch of the circuit due to the open switch.
52. What current flows through the 75-Ω resistor in the circuit below?



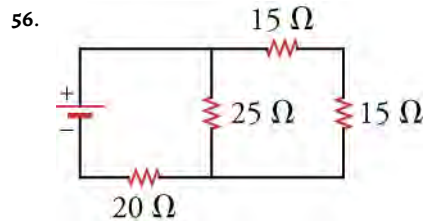
- a. 0.072 A
b. 0.12 A
c. 0.18 A
d. 0.3 A
53. What is the equivalent resistance for the circuit below if $V = 9.0 \text{ V}$ and $I = 0.25 \text{ A}$?



- a. 0.028Ω
b. 2.25Ω
c. 36Ω
d. 72Ω

19.3 Parallel Circuits

54. Ten $100\text{-}\Omega$ resistors are connected in series. How can you increase the total resistance of the circuit by about 40 percent?
- Adding two $10\text{-}\Omega$ resistors increases the total resistance of the circuit by about 40 percent.
 - Removing two $10\text{-}\Omega$ resistors increases the total resistance of the circuit by about 40 percent.
 - Adding four $10\text{-}\Omega$ resistors increases the total resistance of the circuit by about 40 percent.
 - Removing four $10\text{-}\Omega$ resistors increases the total resistance of the circuit by about 40 percent.
55. Two identical resistors are connected in parallel across the terminals of a battery. If you increase the resistance of one of the resistors, what happens to the current through and the voltage across the other resistor?
- The current and the voltage remain the same.
 - The current decreases and the voltage remains the same.
 - The current and the voltage increases.
 - The current increases and the voltage remains the same.



In the circuit below, through which resistor(s) does the most current flow? Through which does the least flow? Explain.

- The most current flows through the $15\text{-}\Omega$ resistor because all the current must pass through this resistor.
- The most current flows through the $20\text{-}\Omega$ resistor because all the current must pass through this resistor.
- The most current flows through the $25\text{-}\Omega$ resistor because it is the highest resistance.
- The same current flows through all the resistors because all the current must pass through each of the resistors.

19.4 Electric Power

57. You want to increase the power dissipated in a circuit.

You have the choice between doubling the current or doubling the resistance, with the voltage remaining constant. Which one would you choose?

- doubling the resistance
 - doubling the current
58. You want to increase the power dissipated in a circuit. You have the choice between reducing the voltage or reducing the resistance, with the current remaining constant. Which one would you choose?
- reduce the voltage to increase the power
 - reduce the resistance to increase the power
59. What power is dissipated in the circuit consisting of $310\text{-}\Omega$ resistors connected in series across a 9.0-V

battery?

- The power dissipated is 2430 W .
 - The power dissipated is 270 W .
 - The power dissipated is 2.7 W .
 - The power dissipated is 0.37 W .
60. What power is dissipated in a circuit consisting of three $10\text{-}\Omega$ resistors connected in parallel across a 9.0-V battery?
- The power dissipated is 270 W .
 - The power dissipated is 30 W .
 - The power dissipated is 24 W .
 - The power dissipated is $1/24\text{ W}$.

Extended Response

19.1 Ohm's law

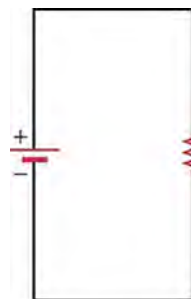
61. Describe the relationship between current and charge. Include an explanation of how the direction of the current is defined.
- Electric current is the charge that passes through a conductor per unit time. The direction of the current is defined to be the direction in which positive charge would flow.
 - Electric current is the charges that move in a conductor. The direction of the current is defined to be the direction in which positive charge would flow.
 - Electric current is the charge that passes through a conductor per unit time. The direction of the current is defined to be the direction in which negative charge would flow.
 - Electric current is the charges that move in a conductor. The direction of the current is defined to be the direction in which negative charge would flow.
62. What could cause Ohm's law to break down?
- If small amount of current flows through a resistor, the resistor will heat up so much that it will change state, in violation of Ohm's law.
 - If excessive amount of current flows through a resistor, the resistor will heat up so much that it will change state, in violation of Ohm's law.
 - If small amount of current flows through a resistor, the resistor will not heat up so much and it will not change its state, in violation of Ohm's law.
 - If excessive amount of current flows through a resistor, the resistor will heat up so much that it will not change its state, in violation of Ohm's law.
63. You connect a single resistor R across a 10-V battery and find that 0.01 A flows through the circuit. You add

another resistor R after the first resistor and find that 0.005 A flows through the circuit. If you have 10 resistors R connected in a line one after the other, what would be their total resistance?

- $\frac{R}{10}$
- $5R$
- $\frac{10}{R}$
- $10R$

19.2 Series Circuits

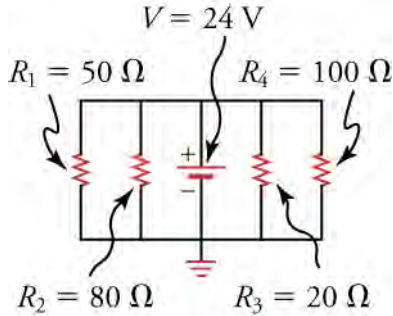
64. Explain why the current is the same at all points in the circuit below.



- If the current were not constant, the mobile charges would bunch up in places, which means that the voltage would decrease at that point. A lower voltage at some point would push the current in the direction that further decreases the voltage.
- If the current were not constant, the mobile charges would bunch up in places, which means that the voltage would increase at that point. But a higher voltage at some point would push the current in the direction that decreases the voltage.
- If the current were not constant, the mobile charges would bunch up in places, which mean that the voltage would increase at that point. A higher voltage at some point would push the current in the direction that further increases the

voltage.

- d. If the current were not constant, the mobile charges would bunch up in places, which mean that the voltage would decrease at that point. But a lower voltage at some point would push the current in the direction that increases the voltage.
65. What is the current through each resistor in the circuit?



- a. Current through resistors R_1 , R_2 , R_3 , and R_4 is 0.48 A, 0.30 A, 1.2 A, and 0.24 A, respectively.
- b. Current through resistors R_1 , R_2 , R_3 , and R_4 is 1200 A, 1920 A, 480 A, and 2400 A, respectively.
- c. Current through resistors R_1 , R_2 , R_3 , and R_4 is 2.08 A, 3.34 A, 0.833 A, and 4.17 A, respectively.
- d. The same amount of current, 0.096 A, flows through all of the resistors.

19.3 Parallel Circuits

66. In a house, a single incoming wire at a high potential with respect to the ground provides electric power. How are the appliances connected between this wire and the

ground, in parallel or in series? Explain.

- a. The appliances are connected in parallel to provide different voltage differences across each appliance.
- b. The appliances are connected in parallel to provide the same voltage difference across each appliance.
- c. The appliances are connected in series to provide the same voltage difference across each appliance.
- d. The appliances are connected in series to provide different voltage differences across each appliance.

19.4 Electric Power

67. A single resistor is connected across the terminals of a battery. When you attach a second resistor in parallel with the first, does the power dissipated by the system change?
- a. No, the power dissipated remain same.
- b. Yes, the power dissipated increases.
- c. Yes, the power dissipated decreases.
68. In a flashlight, the batteries are normally connected in series. Why are they not connected in parallel?
- a. Batteries are connected in series for higher voltage and power output.
- b. Batteries are connected in series for lower voltage and power output.
- c. Batteries are connected in series so that power output is a much lower for the same amount of voltage.
- d. Batteries are connected in series to reduce the overall loss of energy from the circuit.

